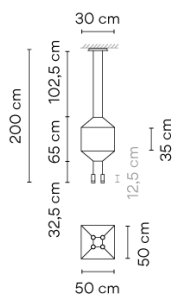
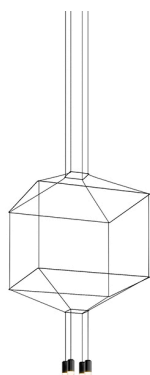


0312

Design By Arik Levy

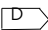
Wireflow designed by Arik Levy. A hanging lamp which reviews and updates the chandelier look through an exercise of simplification that explores its essence and enhances its outline with great delicacy and at the same time a strong formal presence. Its appearance, as a structure of fine cables finished with four LED terminals, discretely connects with classic chandelier models, taking this type of lamp to a new, groundbreaking and futuristic dimension. Employing CREA product configurator software, the design can be modified to adapt to your specific project requirements.

Model Sheet



Optional: Extra cable length
Min. quantity, upcharge and extra lead time apply [EN]

Finish	● O4 Black RAL 9005
LED temperature color	2700 K / 3000 K / 3500 K
Dimming	Push; 1-10V; DALI-2 / Casambi
Installation type	Surface Canopy

Materials	Ceiling rose: Steel Body: Aluminum Horizontal rods: Steel
Light source	4 x LED 4,48W 350mA 
LED	CR>90 1961 lm 109 2700 K / 3000 K / 3500 K
Driver	Constant Current 350 110~240 V V 50~60 Hz HZ

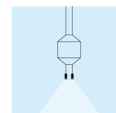


Application	Hanging lamps
Packaging	2 Box 0.833 m x 0.819 m x 0.086 m Gross weight 8.3 Net weight 6.97 Vol. 0.1027

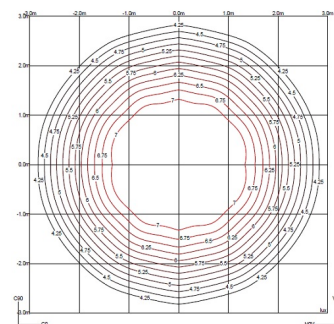
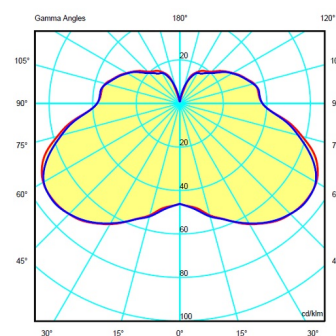
Lighting effect

Volumetric Diffuser

Subtly directed, diffused light that generates a soft hierarchy of light on to the illuminated surface

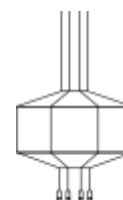


Photometric Data



Efficiency	40.11%
Coordinate System	CG
Total Flux	1961
Maximum Value	53.86

Other Applications



All of our products come with a five-year warranty. Check our legal terms at www.vibia.com/warranty

Vibia Lighting, S.L.U.

Office / Oficina
Progrés 4-6. 08850 Gavà. Barcelona, Spain.

International T +34 934 796 971
Spain / Portugal T +34 934 796 970

customer.service@vibia.com
vibia.com