

Flamingo

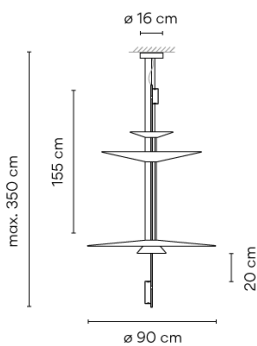
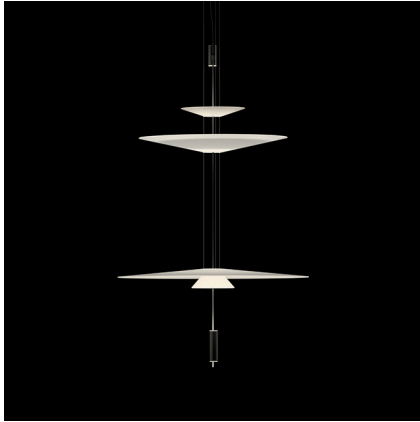
VIBIA

1560

Design By Antoni Arola

The designer Antoni Arola has created the Flamingo lamps collection for Vibia. A collection of pendant lights that provides an ambient light through a thermoplastic translucent diffuser which performs like a spot light thanks to its LED light source.

Model Sheet



Optional: Extra cable length
Min. quantity, upcharge and extra lead time apply [EN]

Finish	 20 Gold Gold
	 18 Graphite RAL 7016
	 93 White RAL 9016
LED temperature color	2700 K / 3500 K
Dimming	Push; 1-10V / Casambi / DALI-2

Installation type Surface Canopy

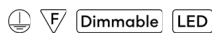
Materials LED support: Aluminum
Shade: PMMA
Rods: Steel
Ceiling rose: Steel

Light source 3 x LED 5,6W 500mA



LED CRI>90 2083 lm 124
2700 K / 3500 K

Driver Constant Current 500
220-240 V V 50-60 Hz HZ



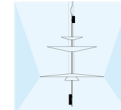
Application Hanging lamps

Packaging 3 Box
1.852 m x 0.23 m x 0.24 m
Gross weight 18.1
Net weight 16.68
Vol. 0.2655

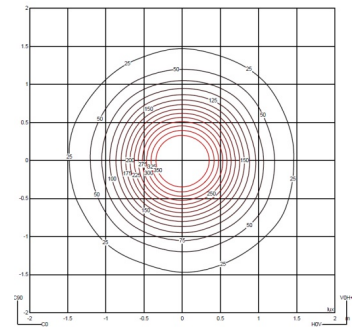
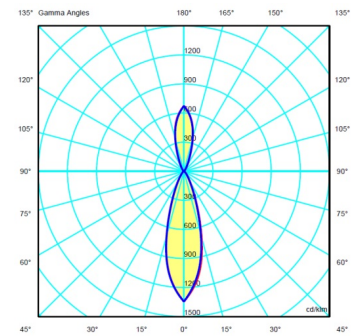
Lighting effect

Volumetric Diffuser

Subtly directed, diffused light that generates a soft hierarchy of light on to the illuminated surface

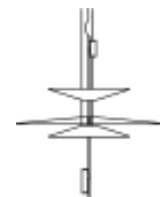


Photometric Data



Efficiency	79.31%
Coordinate System	CG
Total Flux	2083.26
Maximum Value	1344.47

Other Applications



All of our products come with a five-year warranty. Check our legal terms at www.vibia.com/warranty

Vibia Lighting, S.L.U.

Office / Oficina
Progrés 4-6. 08850 Gavà. Barcelona, Spain.

International T +34 934 796 971
Spain / Portugal T +34 934 796 970

customer.service@vibia.com
vibia.com