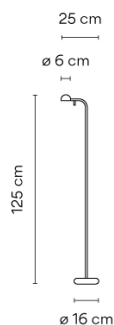


## 1660

Design By Ichiro Iwasaki

Floor lamp. Design by Ichiro Iwasaki. This reading lamp is characterized by having a diffuser with an adjustable head. Available in white, black, cream and green matt finishes.

### Model Sheet



**Finish**

- 58 Cream  
NCS S 2005-Y20R
- 23 Warm White  
test ral
- 04 Black  
NCS 9000N

**LED temperature color** 2700 K

**Dimming** On/Off

**Installation type** Plug-in

**Materials**

- Head: Aluminium
- Base: Zinc Alloy
- Diffuser: PC- Polycarbonate
- Rods: Steel

**Light source** 1 x LED 4,48W 350mA



**LED** CRI>90 452.95 lm 100.66 2700 K

**Driver** Constant Current 350 100~240 V V 50-60 Hz HZ

**Remarks** Switch on the cable



**Application** Floor and Table Lamps

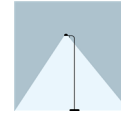
**Packaging**

- 1 Box
- 0.33 m x 0.265 m x 1.496 m
- Gross weight 7.45
- Net weight 3.8
- Vol. 0.1308

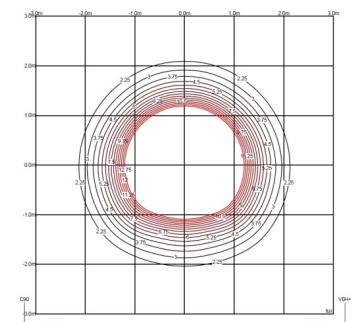
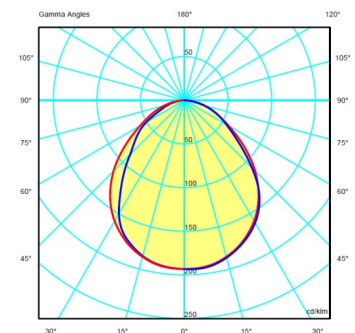
#### Lighting effect

##### Reading

High intensity, glare-free task lighting

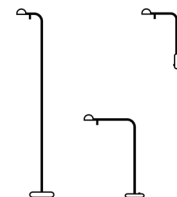


#### Photometric Data



**Efficiency** 31.88 lm/W  
**Coordinate System** CG  
**Total Flux** 192.18 lm  
**Maximum Value** 80.54 cd

#### Other Applications



All of our products come with a five-year warranty. Check our legal terms at [www.vibia.com/warranty](http://www.vibia.com/warranty)

Vibia Lighting, S.L.U.

Office / Oficina  
 Progrés 4-6. 08850 Gavà. Barcelona, Spain.

International T +34 934 796 971  
 Spain / Portugal T +34 934 796 970

customer.service@vibia.com  
 vibia.com