

Halo lineal

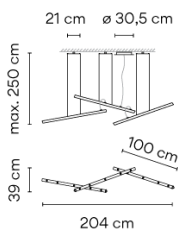
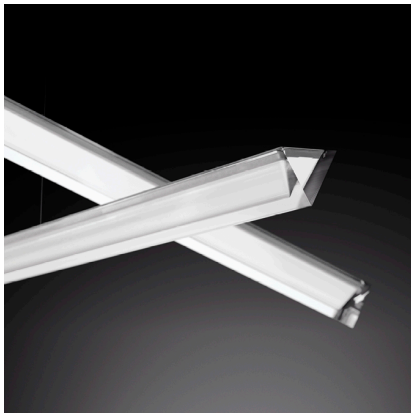
VIBIA

2341

Design By Martín Azúa

HALO is a hanging lamp with three intertwined, straight pieces, which creates subtle, magical lighting. Designed by Martín Azúa. By combining different pieces you can show off hanging lights which float in the air to fit harmoniously into the room. It is available in matt white lacquer.

Model Sheet



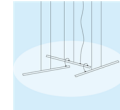
Optional: Extra cable length
Min. quantity, upcharge and extra lead time apply [EN]

Finish	03 White RAL 9016
LED temperature color	2700 K / 3000 K
Dimming	1-10V / Casambi / DALI
Installation type	Remote XXS / Surface Canopy
Materials	Diffuser: PMMA Ceiling rose: Steel
Light source	3 x LED STRIP 24V 15.3W A
LED	CRI>80 3851 lm 85.57 2700 K / 3000 K
Driver	Constant Voltage 100~240 V V 50~60 Hz HZ
Remarks	1-10V Electronic dimming ⚡ F Dimmable LED IP20 Bi-volt 50-60Hz 1-10V
Application	Hanging lamps
Packaging	2 Box 1,265 m x 0,19 m x 0,13 m Gross weight 7,3 Net weight 6,57 Vol. 0,0463

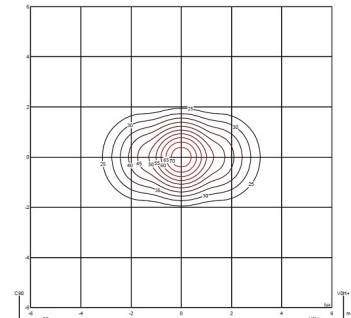
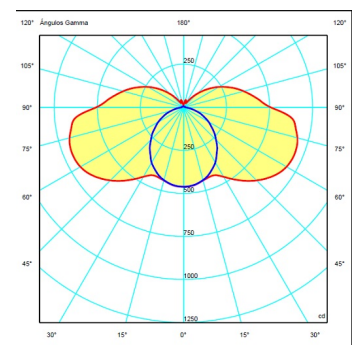
Lighting effect

Volumetric Diffuser

Subtly directed, diffused light that generates a soft hierarchy of light on to the illuminated surface

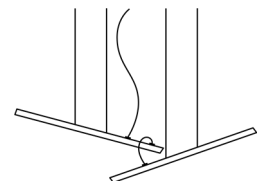


Photometric Data



Efficiency	60.85 lm/W
Coordinate System	CG
Total Flux	3472.02 lm
Maximum Value	699.21 cd

Other Applications



All of our products come with a five-year warranty. Check our legal terms at www.vibia.com/warranty

Vibia Lighting, S.L.U.

Office / Oficina
Progrés 4-6. 08850 Gavà. Barcelona, Spain.

International T +34 934 796 971
Spain / Portugal T +34 934 796 970

customer.service@vibia.com
vibia.com