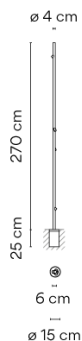


4805

Design By Antoni Arola & Enric Rodríguez

Bamboo is an outdoor beacon with three finishes that make it possible to camouflage and integrate it into the landscape, with the added surprise that it produces light. Available in khaki, stainless steel and off-white. Designed by Antoni Arola & Enric Rodríguez.

Model Sheet



Finish

- 58 Off-white
Pantone Warm Gray 2 U
- 07 Khaki
RAL 7006

LED temperature color 2700 K / 3500 K

Dimming On/Off

Installation type Built-in

Materials Cane: PES + FG- Fiberglass
Diffuser: PMMA

Light source 4 x LED 2,1W 700mA



LED CRI>90 797 lm 95
2700 K / 3500 K

Driver Constant Current 700 100~240
V V 50~60 Hz HZ



Bi-volt 50-60Hz

Application Outdoor lamps

Packaging 2 Box
3 m x 0.125 m x 0.125 m
Gross weight 9.8
Net weight 8.91
Vol. 0.0886

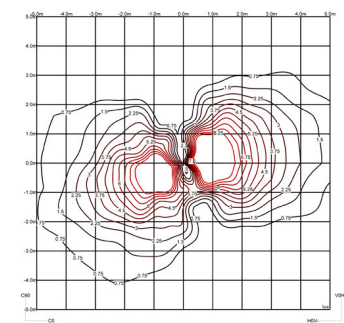
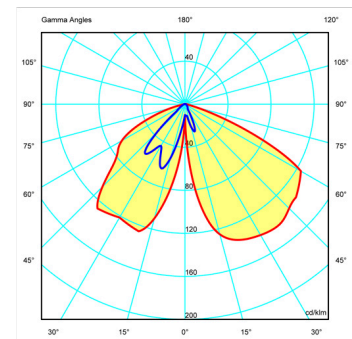
Lighting effect

Accent

Narrow: Angles less than 20°. Suitable for generating high contrasts or projections at far distances. Medium: Angles between 20° and 40°. Suitable for generating medium contrasts or projections at medium distances. Wide: Angles greater than 40°. Suitable for generating moderate contrasts or projections at near distances.



Photometric Data



Other Applications



All of our products come with a five-year warranty. Check our legal terms at www.vibia.com/warranty

Vibia Lighting, S.L.U.

Office / Oficina
Progrés 4-6. 08850 Gavà. Barcelona, Spain.

International T +34 934 796 971
Spain / Portugal T +34 934 796 970

customer.service@vibia.com
vibia.com