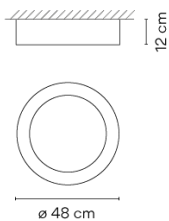


## 4870

Design By Ramos & Bassols

Duo is a ceiling light with surface installation where the natural warm appearance of the oak wood on the inside is combined with the technical refinement of the aluminium metal wrap on the outside.

### Model Sheet

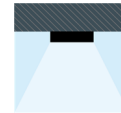


<b>Finish</b>	<ul style="list-style-type: none"> <li><span style="display: inline-block; width: 10px; height: 10px; background-color: black; border-radius: 50%; margin-right: 5px;"></span> 18 Graphite ADAPTA RF 9913 WX</li> <li><span style="display: inline-block; width: 10px; height: 10px; background-color: white; border-radius: 50%; margin-right: 5px;"></span> 93 White RAL 9016</li> <li><span style="display: inline-block; width: 10px; height: 10px; background-color: #c8a28c; border-radius: 50%; margin-right: 5px;"></span> 58 Cream RAL 7044</li> </ul>
<b>LED temperature color</b>	2700 K / 3500 K
<b>Dimming</b>	Push; 1-10V; DALI-2 / Casambi
<b>Installation type</b>	Surface Canopy
<b>Materials</b>	Shade: Wood
<b>Light source</b>	1 x LED PLATE 26W 500mA 
<b>LED</b>	CR>90 2206 lm 98 2700 K / 3500 K
<b>Driver</b>	Constant Current 500 110~240 V V 50~60 Hz HZ  <b>Dimmable</b> <b>IP20</b> <b>Bi-volt</b> <b>50-60Hz</b>
<b>Application</b>	Ceiling Lamps
<b>Packaging</b>	1 Box 0.558 m x 0.558 m x 0.255 m Gross weight 7 Net weight 6 Vol. 0.0793

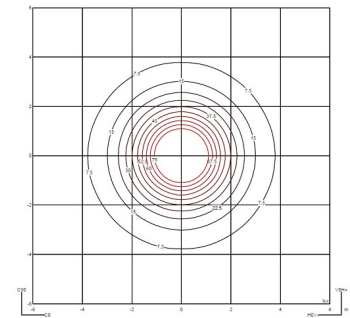
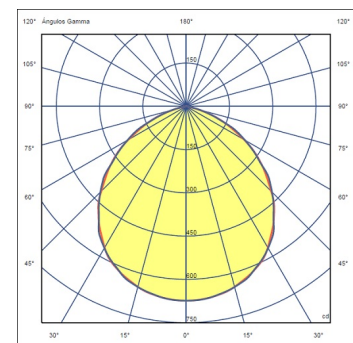
#### Lighting effect

##### General

First layer of basic, general illumination



#### Photometric Data



#### Other Applications



All of our products come with a five-year warranty. Check our legal terms at [www.vibia.com/warranty](http://www.vibia.com/warranty)

**Vibia Lighting, S.L.U.**

Office / Oficina  
Progrés 4-6. 08850 Gavà. Barcelona, Spain.

International T +34 934 796 971  
Spain / Portugal T +34 934 796 970

customer.service@vibia.com  
vibia.com