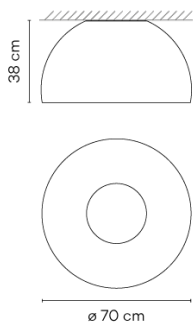


4878

Design By Ramos & Bassols

Duo is a ceiling light with surface installation where the natural warm appearance of the oak wood on the inside is combined with the technical refinement of the aluminium metal wrap on the outside.

Model Sheet



Finish

- 18 Graphite
ADAPTA RF 9913 WX
- 93 White
RAL 9016
- 58 Cream
RAL 7044

LED temperature color 2700 K / 3500 K

Dimming Push; 1-10V; DALI-2 / Casambi

Installation type Surface Canopy

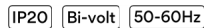
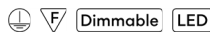
Materials Shade: Wood

Light source 1 x LED PLATE 26W 500mA



LED CRI>90 2206 lm 98
2700 K / 3500 K

Driver Constant Current 500 110~240
V V 50~60 Hz HZ



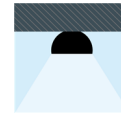
Application Ceiling Lamps

Packaging 1 Box
0.593 m x 0.785 m x 0.785 m
Gross weight 20.3
Net weight 14
Vol. 0.3654

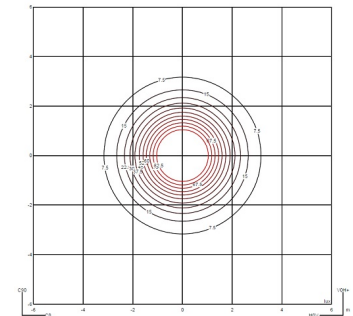
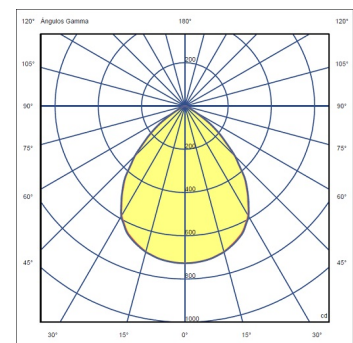
Lighting effect

General

First layer of basic, general illumination



Photometric Data



Efficiency 49.81 lm/W
Coordinate System CG
Total Flux 1284.41 lm
Maximum Value 727.04 cd

Other Applications



All of our products come with a five-year warranty. Check our legal terms at www.vibia.com/warranty

Vibia Lighting, S.L.U.

Office / Oficina
Progrés 4-6. 08850 Gavà. Barcelona, Spain.

International T +34 934 796 971
Spain / Portugal T +34 934 796 970

customer.service@vibia.com
vibia.com