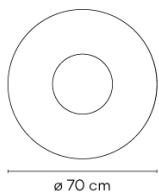
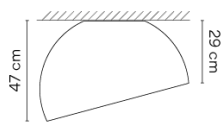


4880

Design By Ramos & Bassols

Duo is a ceiling light with surface installation where the natural warm appearance of the oak wood on the inside is combined with the technical refinement of the aluminium metal wrap on the outside.

Model Sheet

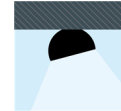


Finish	<ul style="list-style-type: none"> 18 Graphite ADAPTA RF 9913 WX 93 White RAL 9016 58 Cream RAL 7044
LED temperature color	2700 K / 3500 K
Dimming	Push; 1-10V; DALI-2 / Casambi
Installation type	Surface Canopy
Materials	Shade: Wood
Light source	1 x LED PLATE 26W 500mA
LED	CR>90 2068 lm 109 2700 K / 3500 K
Driver	Constant Current 500 110~240 V V 50~60 Hz HZ
	Dimmable LED IP20 Bi-volt 50-60Hz
Application	Ceiling Lamps
Packaging	1 Box 0.593 m x 0.785 m x 0.785 m Gross weight 20.6 Net weight 14 Vol. 0.3654

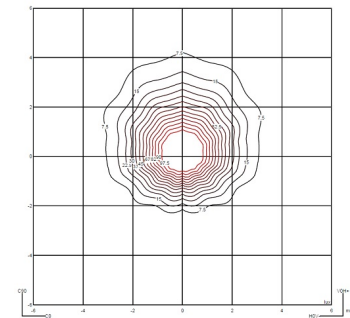
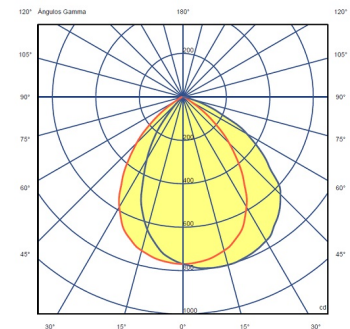
Lighting effect

General

First layer of basic, general illumination



Photometric Data



Efficiency	51.35 lm/W
Coordinate System	CG
Total Flux	1343.81 lm
Maximum Value	801.14 cd

Other Applications



All of our products come with a five-year warranty. Check our legal terms at www.vibia.com/warranty

Vibia Lighting, S.L.U.

Office / Oficina
Progrés 4-6. 08850 Gavà. Barcelona, Spain.

International T +34 934 796 971
Spain / Portugal T +34 934 796 970

customer.service@vibia.com
vibia.com