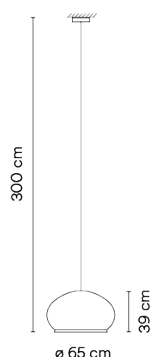
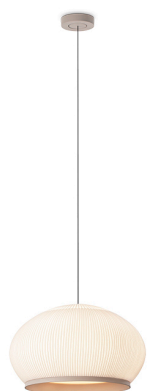


7470

Design By Meike Harde

The large Knit hanging lamp is characterised by the light emitted by its fabric shade, creating a soft light effect that generates a warm, cosy atmosphere.

Model Sheet



Optional: Extra cable length
Min. quantity, upcharge and extra lead time apply [EN]

Finish	24 Beige M1 NCS S 2005-Y50R
LED temperature color	2700 K
Dimming	Casambi / DALI / 1-10V
Installation type	Surface Free Wire / Built-in XS / Remote XXS

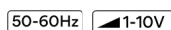
Materials
Fabric Shade: PES FR
Diffuser ring and support: ABS
Diffuser: PMMA
Ceiling rose: ABS

Light source
6 x LED 6,7 W 1200 mA



LED
CRI>90 4740 lm 133.9
2700 K

Driver
Constant Current 1200
110~240 V V 50~60 Hz HZ



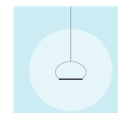
Application
Hanging lamps

Packaging
1 Box
0.593 m x 0.785 m x 0.785 m
Gross weight 9
Net weight 5.5
Vol. 0.3654

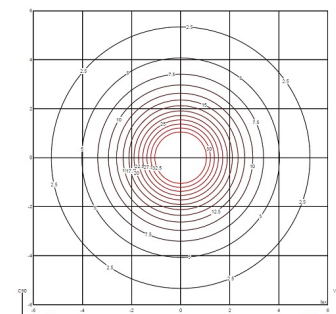
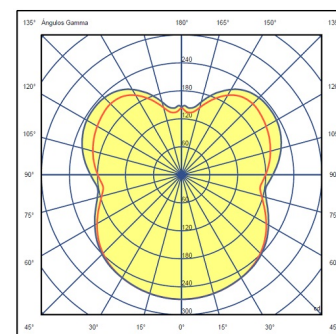
Lighting effect

Volumetric Diffuser

Subtly directed, diffused light that generates a soft hierarchy of light on to the illuminated surface

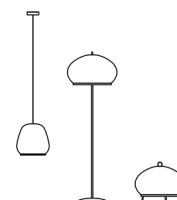


Photometric Data



Efficiency	59.24 lm/W
Coordinate System	CG
Total Flux	2645.16 lm
Maximum Value	266.71 cd

Other Applications



All of our products come with a five-year warranty. Check our legal terms at www.vibia.com/warranty

Vibia Lighting, S.L.U.

Office / Oficina
Progrés 4-6. 08850 Gavà. Barcelona, Spain.

International T +34 934 796 971
Spain / Portugal T +34 934 796 970

customer.service@vibia.com
vibia.com