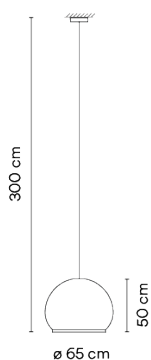
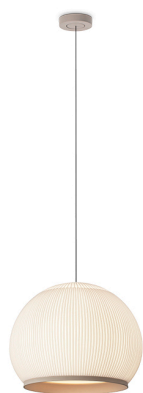


## 7475

Design By Meike Harde

The large Knit hanging lamp is characterised by the light emitted by its fabric shade, creating a soft light effect that generates a warm, cosy atmosphere.

### Model Sheet



**Optional: Extra cable length**  
Min. quantity, upcharge and extra lead time apply [EN]

<b>Finish</b>	24 Beige M1 NCS S 2005-Y50R
<b>LED temperature color</b>	2700 K
<b>Dimming</b>	Casambi / DALI / NO DRIVER / 1-10V
<b>Installation type</b>	Surface Free Wire / Remote Micro / Built-in XS

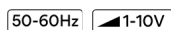
**Materials** Fabric Shade: PES FR  
Diffuser ring and support: ABS  
Diffuser: PMMA  
Ceiling rose: ABS

**Light source** 6 x LED 6,7 W 1200 mA



**LED** CRI>90 4740 lm 133.9  
2700 K

**Driver** Constant Current 1200  
110~240 V V 50~60 Hz HZ



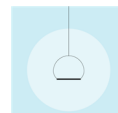
**Application** Hanging lamps

**Packaging** 1 Box  
0.8 m x 0.8 m x 0.75 m  
Gross weight 9.5  
Net weight 6  
Vol. 0.48

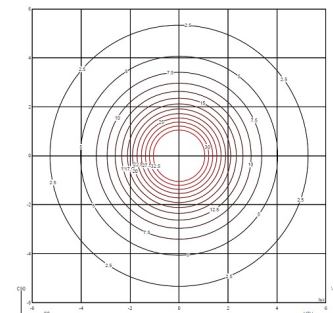
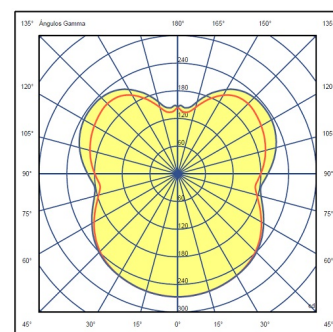
#### Lighting effect

##### Volumetric Diffuser

Subtly directed, diffused light that generates a soft hierarchy of light on to the illuminated surface

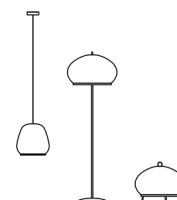


#### Photometric Data



**Efficiency** 59.24 lm/W  
**Coordinate System** CG  
**Total Flux** 2645.16 lm  
**Maximum Value** 266.71 cd

#### Other Applications



All of our products come with a five-year warranty. Check our legal terms at [www.vibia.com/warranty](http://www.vibia.com/warranty)

Vibia Lighting, S.L.U.

Office / Oficina  
Progrés 4-6. 08850 Gavà. Barcelona, Spain.

International T +34 934 796 971  
Spain / Portugal T +34 934 796 970

customer.service@vibia.com  
vibia.com