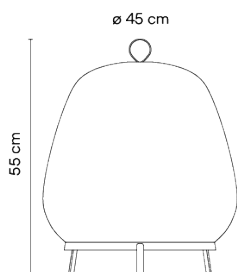


7490

Design By Meike Harde

Due to its large size, the Knit floor lamp takes centre stage, drawing people towards it by attracting their gazes, while its fabric shade has a welcoming tactile quality. The ring in its upper part makes it easily portable.

Model Sheet



| | |
|------------------------------|--------------------------------|
| Finish | 24 Beige M1 NCS S 2005-Y50R |
| LED temperature color | 2700 K |
| Dimming | Push / Casambi |
| Installation type | Plug-in |

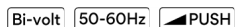
Materials Fabric Shade: PES FR
Diffuser ring and support: ABS
Diffuser: PMMA

Light source 6 x LED 5,9W 1050mA



LED CRI>90 4740 lm 133.9
2700 K

Driver Constant Voltage 1050
100-240 V V 50-60 Hz HZ



Application Floor and Table Lamps

Packaging 1 Box
0.55 m x 0.55 m x 0.65 m
Gross weight 5.4
Net weight 3.3
Vol. 0.1966

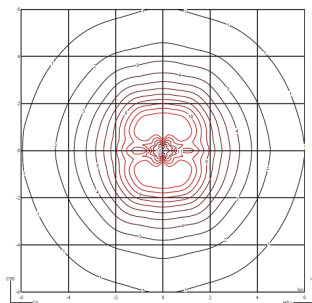
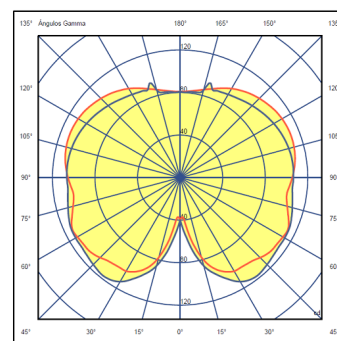
Lighting effect

Volumetric Diffuser

Subtly directed, diffused light that generates a soft hierarchy of light on to the illuminated surface

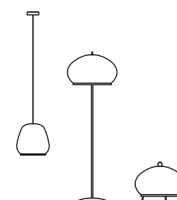


Photometric Data



Efficiency 50.38 lm/W
Coordinate System CG
Total Flux 1286.57 lm
Maximum Value 125.33 cd

Other Applications



All of our products come with a five-year warranty. Check our legal terms at www.vibia.com/warranty

Vibia Lighting, S.L.U.

Office / Oficina
Progrés 4-6. 08850 Gavà. Barcelona, Spain.

International T +34 934 796 971
Spain / Portugal T +34 934 796 970

customer.service@vibia.com
vibia.com