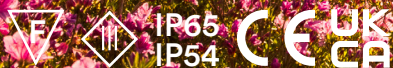


**erluna**

**camber adjustable**  
**origin**

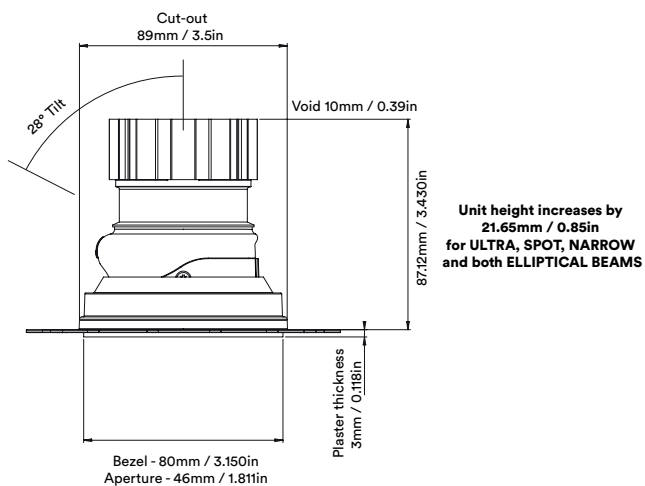
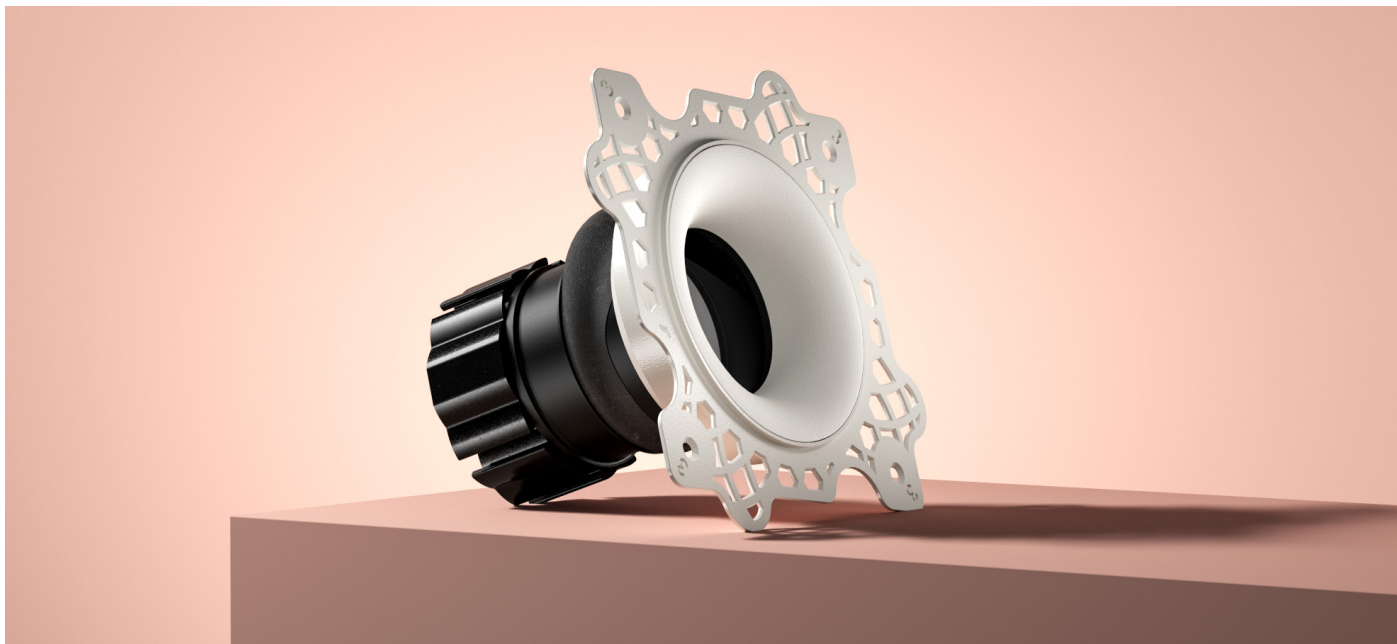
**circular product**





camber adjustable  
origin

circular product



# camber adjustable origin

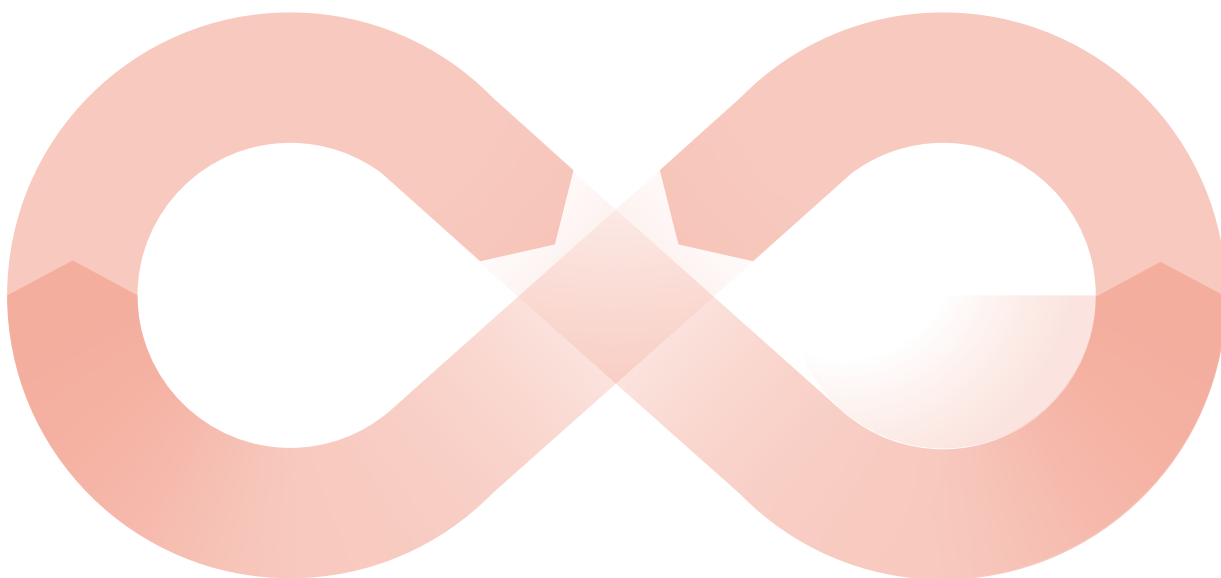
# circular product

When an old Orluna light comes to the end of its life, or is faulty, instead of throwing it away, we kindly ask you to return it to us.

**1**

The fully repaired and tested product enters back into our stock –with a brand new warranty.

**3**



The 'new' light fitting is despatched to a new customer.

**4**

Once we've received the unwanted or faulty fitting, it's dismantled, repaired and renewed with a new LED and PCB.

**2**



# camber adjustable origin

# circular product

		2700K										
		SPOT			SOFT				SPECIALITY			
LIGHT VALUES	Beam Width FWHM	Ultra 8°	Spot 10°	Narrow 14°	Medium 27°	Wide 42°	Flood 48°	Wash 55°	Crisp 37°	Elliptical 10x45°	Elliptical 20x40°	
		Initial Lumens	526	893	1164	1164	1164	1164	1164	1164	893	893
		Engine Lumens	183	295	380	975	968	935	942	970	323	320
		Luminaire Lumens	147	265	372	626	624	574	615	678	165	224
		Engine Lm/W	23	24	33	86	85	82	83	85	26	26
		Luminaire Cd	5251	7009	5415	2031	1175	886	759	1678	696	1295
POWER	Voltage	36V	36V	34V				36V				
	Drive Current	180mA	300mA	300mA				300mA				
	Circuit Power (typ)	7.8W	12.2W	11.4W				12.2W				

		3000K										
		SPOT			SOFT				SPECIALITY			
LIGHT VALUES	Beam Width FWHM	Ultra 8°	Spot 10°	Narrow 14°	Medium 27°	Wide 42°	Flood 48°	Wash 54°	Crisp 37°	Elliptical 10x45°	Elliptical 20x40°	
		Initial Lumens	561	935	1252	1252	1252	1252	1252	1252	935	935
		Engine Lumens	204	302	407	1013	1026	999	1013	1025	354	350
		Luminaire Lumens	205	289	372	664	651	603	640	741	155	218
		Engine Lm/W	26	25	36	89	90	88	89	90	29	29
		Luminaire Cd	6565	7082	5288	2182	1223	930	810	1759	717	1343
POWER	Voltage	36V	36V	34V				36V				
	Drive Current	180mA	300mA	300mA				300mA				
	Circuit Power (typ)	7.8W	12.2W	11.4W				12.2W				

Binning SDCM (Hot)	2
CRI (typ)(R9)	99 (98)
TM30 Rf Rg	Rf 94 Rg 100
Lifetime (TM21)	L90 B5 50,000hrs (inc driver)
Lifetime (Calculated)	L70 426,000hrs
Protocols	Mains Dim / DALI / 0-10V / Non-dim
Dim to Dark	0.1% Lux
Distance from LED	20m / 65' (series wiring)
Emergency	Emergency packs available

## SPECIFICATION CODE

Engine type	Bezel	Colour Temp	Driver	Beam Width	Bezel Colour	Baffle Colour	Options
<b>OR</b>	<b>-CMB-</b>	<b>27</b>	<b>M</b>	<b>S</b>	<b>- W -</b>	<b>BB -</b>	<b>F 54 E</b>
27 / 2700K 30 / 3000K 40 / 4000K			M / Mains Dim D / DALI 0 / 0-10v N / Non Dim X / No Driver	U / Ultra S / Spot N / Narrow M / Medium W / Wide F / Flood H / Wash C / Crisp L / Elliptical Linear O / Elliptical Oval	W / White RAL 9010 D / White RAL 9003 B / Black RAL 9005 C / Other RAL V / Dark Bronze* T / Medium Bronze* R / Light Bronze* Y / Burnished Brass* G / Polished Brass K / Brushed Chrome L / Polished Chrome Z / Other Metallic	WB / White RAL 9010 DB / White RAL 9003 BB / Black RAL 9005 CB / Other RAL VB / Dark Bronze TB / Medium Bronze RB / Light Bronze YB / Burnished Brass GB / Polished Brass KB / Brushed Chrome LB / Polished Chrome ZB / Other Metallic	F / 60 min Fire Rated Plate 54 / IP54 65 / IP65 P / Sea & Spa IP65 T / Lockable Tilt & Rotate E / 3hr Emergency H / Honeycomb N / Frosted Lens Z / LSZH Cable K / Click Connector F- / 60 min Fire Rated Hood

\* - Fire Rated Hood must be used with Dark Bronze, Medium Bronze, Light Bronze and Burnished Brass Bezels

