

erluna

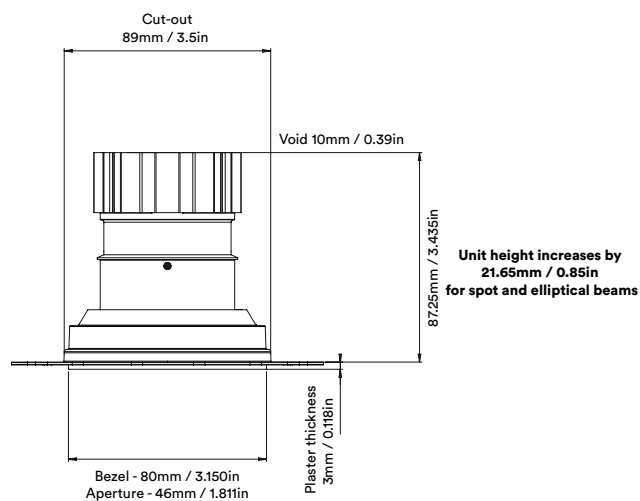
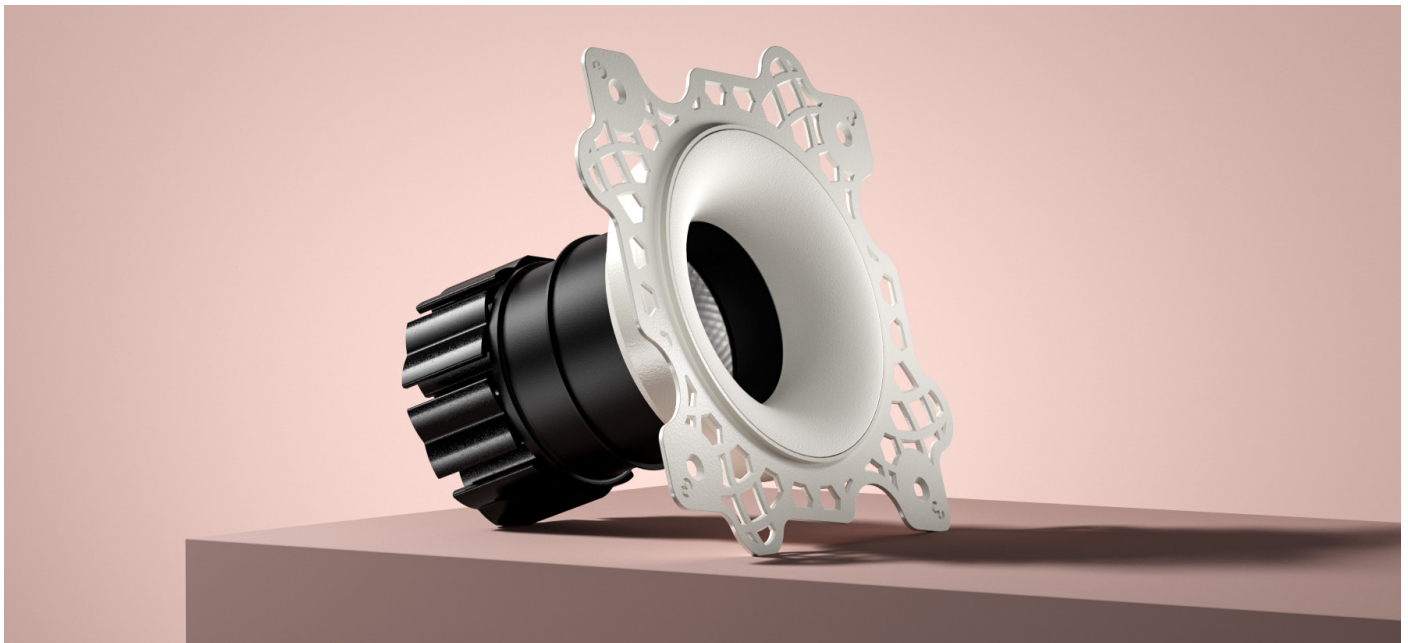
camber fixed
origin

circular product



camber fixed
origin

circular product



camber fixed origin

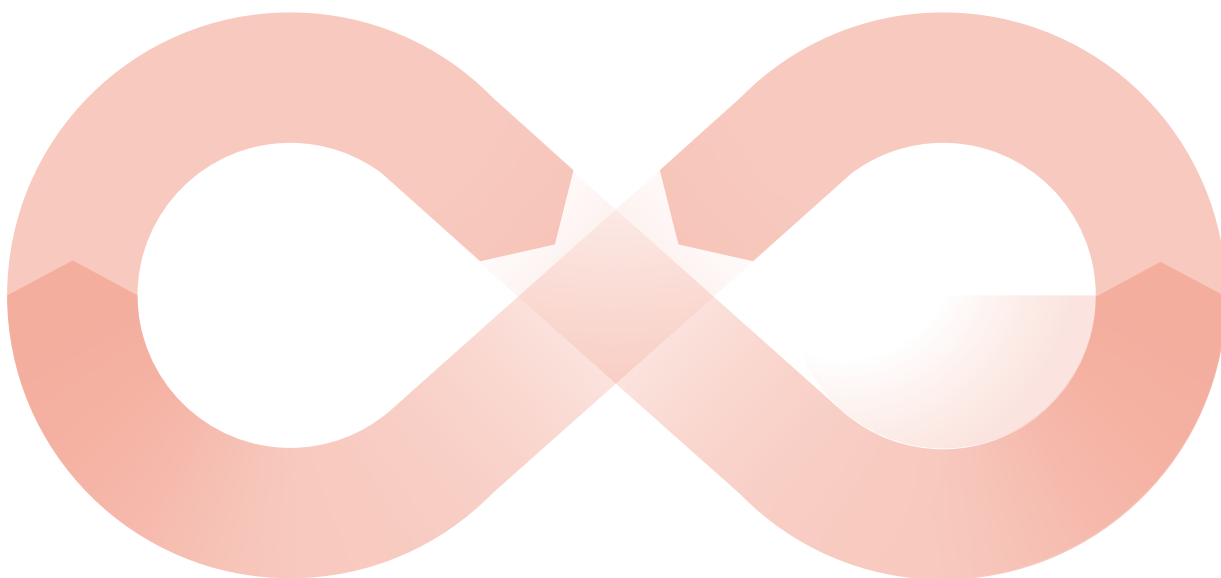
circular product

When an old Orluna light comes to the end of its life, or is faulty, instead of throwing it away, we kindly ask you to return it to us.

1

The fully repaired and tested product enters back into our stock – with a brand new warranty.

3



The 'new' light fitting is despatched to a new customer.

4

Once we've received the unwanted or faulty fitting, it's dismantled, repaired and renewed with a new LED and PCB.

2



camber fixed origin

circular product

		2700K									
		SPOT			SOFT				SPECIALITY		
LIGHT VALUES	Beam Width FWHM	Ultra	Spot	Narrow	Medium	Wide	Flood	Wash	Crisp	Elliptical	Elliptical
	Initial Lumens	8°	10°	14°	27°	42°	48°	55°	37°	10x45°	20x40°
	Engine Lumens	526	893	1164	1164	1164	1164	1164	1164	893	893
	Luminaire Lumens	183	295	380	975	968	935	942	970	323	320
	Engine Lm/W	147	265	372	626	624	574	615	678	165	224
	Luminaire Cd	23	24	33	86	85	82	83	85	26	26
			5251	7009	5415	2031	1175	886	759	1678	696
POWER	Voltage	36V			34V				36V		
	Drive Current	180mA			300mA				300mA		
	Circuit Power (typ)	7.8W			11.4W				12.2W		

		3000K									
		SPOT			SOFT				SPECIALITY		
LIGHT VALUES	Beam Width FWHM	Ultra	Spot	Narrow	Medium	Wide	Flood	Wash	Crisp	Elliptical	Elliptical
	Initial Lumens	8°	10°	14°	27°	42°	48°	54°	37°	10x45°	20x40°
	Engine Lumens	561	935	1252	1252	1252	1252	1252	1252	935	935
	Luminaire Lumens	204	302	407	1013	1026	999	1013	1025	354	350
	Engine Lm/W	205	289	372	664	651	603	640	741	155	218
	Luminaire Cd	26	25	36	89	90	88	89	90	29	29
			6565	7082	5288	2182	1223	930	810	1759	717
POWER	Voltage	36V			34V				36V		
	Drive Current	180mA			300mA				300mA		
	Circuit Power (typ)	7.8W			11.4W				12.2W		

Binning SDCM (Hot)	2										
CRI (typ)(R9)	99 (98)										
TM30 Rf Rg	Rf 94 Rg 100										
Lifetime (TM21)	L90 B5 50,000hrs (inc driver)										
Lifetime (Calculated)	L70 426,000hrs										
DRIVER	Protocols	Mains Dim / DALI / 0-10V / Non-dim									
	Dim to Dark	0.1% Lux									
	Distance from LED	20m / 65' (series wiring)									
	Emergency	Emergency packs available									

SPECIFICATION CODE

Engine type	Bezel	Colour Temp	Driver	Beam Width	Bezel Colour	Baffle Colour	Options
OR	-CBX-	27	M	S	-W-	BB	-F 54 E
27 / 2700K 30 / 3000K 40 / 4000K		27 / 2700K 30 / 3000K 40 / 4000K	M / Mains Dim D / DALI 0 / 0-10v N / Non Dim X / No Driver	U / Ultra S / Spot N / Narrow M / Medium W / Wide F / Flood H / Wash C / Crisp L / Elliptical Linear O / Elliptical Oval	W / White RAL 9010 D / White RAL 9003 B / Black RAL 9005 C / Other RAL V / Dark Bronze* T / Medium Bronze* R / Light Bronze* Y / Burnished Brass* G / Polished Brass K / Brushed Chrome L / Polished Chrome Z / Other Metallic	WB / White RAL 9010 DB / White RAL 9003 BB / Black RAL 9005 CB / Other RAL VB / Dark Bronze TB / Medium Bronze RB / Light Bronze YB / Burnished Brass GB / Polished Brass KB / Brushed Chrome LB / Polished Chrome ZB / Other Metallic	F / 60 min Fire Rated Plate 54 / IP54 65 / IP65 P / Sea & Spa IP65 E / 3hr Emergency H / Honeycomb N / Frosted Lens Z / LSZH Cable K / Click Connector F- / 60 min Fire Rated Hood

* - Fire Rated Hood must be used with Dark Bronze, Medium Bronze, Light Bronze and Burnished Brass Bezels

