



**erluna**

**curve recessed**  
**fixed**  
**origin**

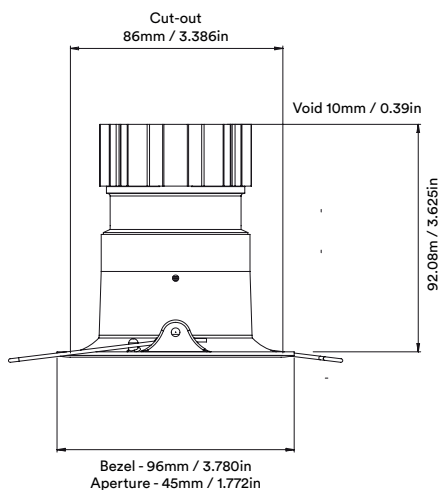
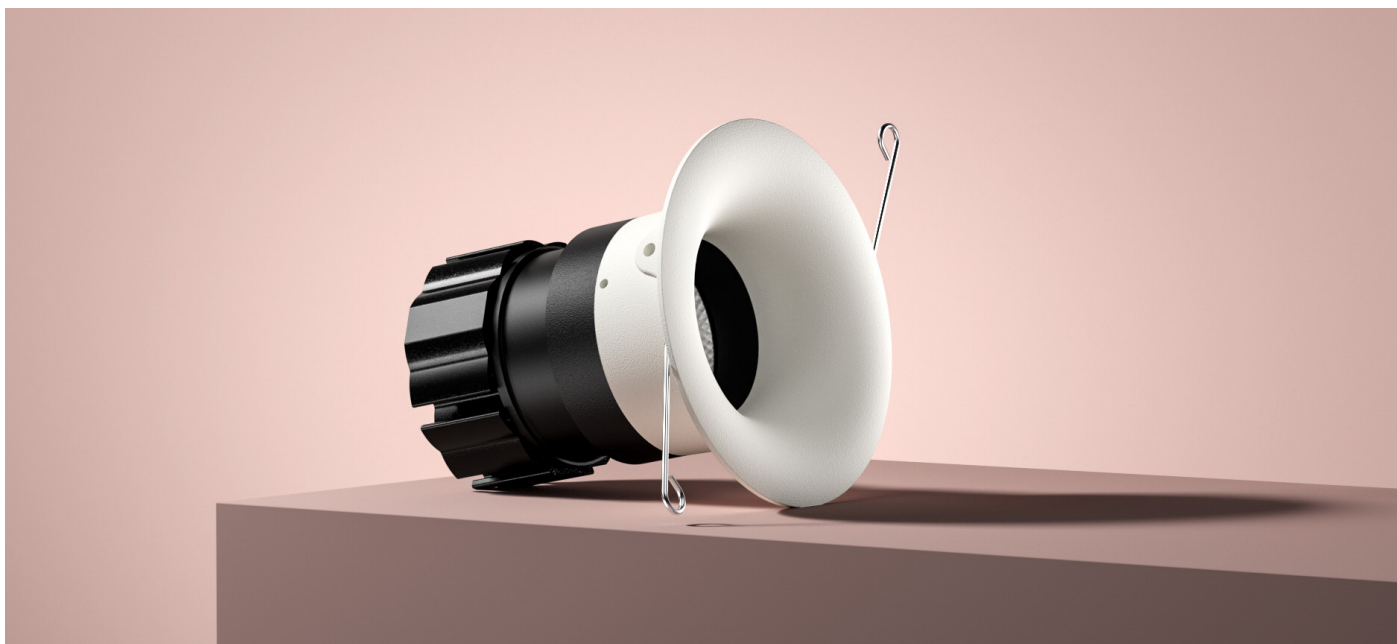
**circular product**

  IP65  
IP54  



curve recessed fixed  
origin

circular product



Unit height increases by  
21.65mm / 0.85in  
for spot and elliptical beams



# curve recessed fixed origin

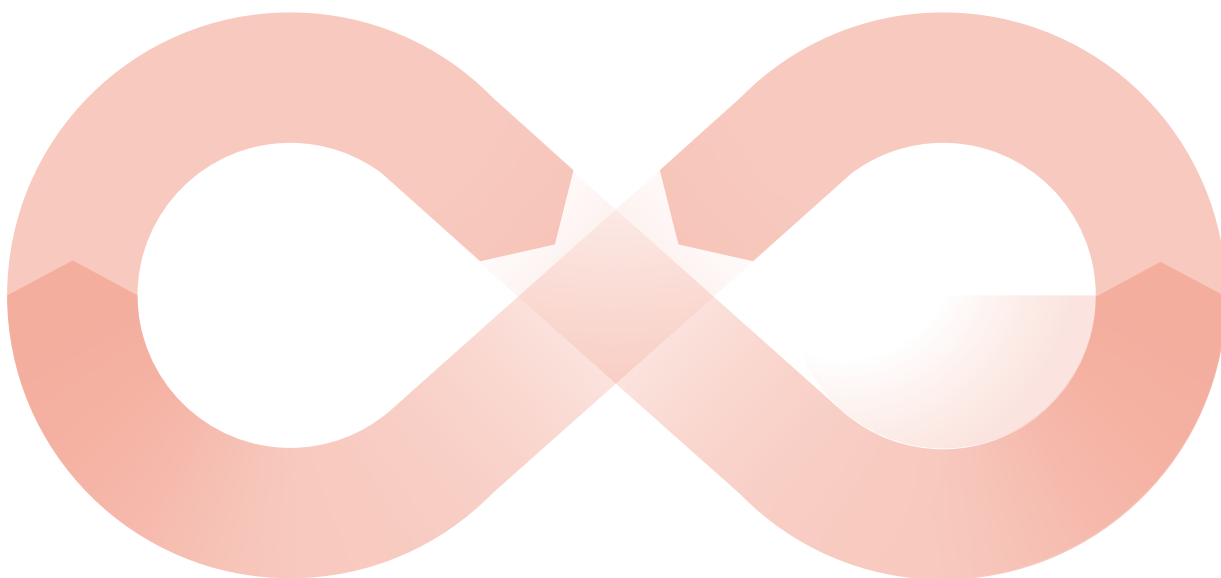
# circular product

When an old Orluna light comes to the end of its life, or is faulty, instead of throwing it away, we kindly ask you to return it to us.

**1**

The fully repaired and tested product enters back into our stock –with a brand new warranty.

**3**



The 'new' light fitting is despatched to a new customer.

**4**

Once we've received the unwanted or faulty fitting, it's dismantled, repaired and renewed with a new LED and PCB.

**2**



# curve recessed fixed origin

# circular product

		2700K									
		SPOT			SOFT				SPECIALITY		
LIGHT VALUES	Beam Width FWHM	Ultra 8°	Spot 10°	Narrow 14°	Medium 26°	Wide 40°	Flood 47°	Wash 54°	Crisp 36°	Elliptical 10x45°	Elliptical 20x40°
	Initial Lumens	526	893	1164	1164	1164	1164	1164	1164	893	893
	Engine Lumens	183	295	380	975	968	935	942	970	323	320
	Luminaire Lumens	162	288	350	608	616	606	561	672	201	245
	Engine Lm/W	23	24	33	81	82	79	79	83	31	31
	Luminaire Cd	5352	7152	5024	2029	1190	936	651	1709	686	1296
POWER	Voltage	36V	36V	34V				36V			
	Drive Current	180mA	300mA	300mA				300mA			
	Circuit Power (typ)	7.8W	12.2W	11.4W				12.2W			

		3000K									
		SPOT			SOFT				SPECIALITY		
LIGHT VALUES	Beam Width FWHM	Ultra 9°	Spot 10°	Narrow 14°	Medium 27°	Wide 41°	Flood 47°	Wash 55°	Crisp 36°	Elliptical 10x45°	Elliptical 20x40°
	Initial Lumens	561	935	1252	1252	1252	1252	1252	1252	935	935
	Engine Lumens	204	302	407	1013	1026	999	1013	1025	350	354
	Luminaire Lumens	173	297	369	629	641	635	580	696	241	270
	Engine Lm/W	26	25	36	88	87	84	84	88	27	29
	Luminaire Cd	5501	7365	5199	2012	1214	964	667	1754	718	1371
POWER	Voltage	36V	36V	34V				36V			
	Drive Current	180mA	300mA	300mA				300mA			
	Circuit Power (typ)	7.8W	12.2W	11.4W				12.2W			

Binning SDCM (Hot)	2
CRI (typ)(R9)	98 (99)
TM30 Rf Rg	Rf 93.8 Rg 101.9
Lifetime (TM21)	L90 B5 50,000hrs (inc driver)
Lifetime (Calculated)	L70 426,000hrs
Protocols	Mains Dim / DALI / 0-10V / Non-dim
Dim to Dark	0.1% Lux
Distance from LED	20m / 65' (series wiring)
Emergency	Emergency packs available

## SPECIFICATION CODE

Engine type	Bezel	Colour Temp	Driver	Beam Width	Bezel Colour	Baffle Colour	Options
<b>OR</b>	<b>-CVRF-</b>	<b>27</b>	<b>M</b>	<b>S</b>	<b>- W -</b>	<b>BB -</b>	<b>F 54 E</b>
		27 / 2700K 30 / 3000K	M / Mains Dim D / DALI 0 / 0-10v N / Non Dim X / No Driver	U / Ultra S / Spot N / Narrow M / Medium W / Wide F / Flood H / Wash C / Crisp L / Elliptical Linear O / Elliptical Oval	W / White RAL 9010 D / White RAL 9003 B / Black RAL 9005 C / Other RAL	WB / White RAL 9010 DB / White RAL 9003 BB / Black RAL 9005 CB / Other RAL GB / Polished Brass KB / Brushed Chrome LB / Polished Chrome ZB / Other Metallic	F / 60 min Fire Rated Plate 54 / IP54 65 / IP65 P / Sea & Spa IP65 H / Honeycomb N / Frosted Lens E / 3hr Emergency Z / LSZH Cable K / Click Connector

28/03/24

