

MICHAELANASTASSIADES

INSTALLATION INSTRUCTIONS



TUBE CHANDELIER, 2006 & 2024 (LV)



## PRODUCT SPECIFICATIONS

Bulb specification 120V / 240V  
Integrated LED 20W / 1000mm Ø 28mm  
1500lm / 2350K

Dimming protocol: Triac (240v), 0-10v or  
DALI (as per specified in the order)

Maximum wattage: 60W  
Product weight: 7kg

IP 20: Indoor Use Only  
(suitable for bathroom Zone 3)

## BEFORE INSTALLING

Please keep these instructions for future reference. Please read instructions in full prior to installation noting all illustrations. Instructions should be followed precisely.

If in any doubt about electrical safety, contact a qualified electrician.

Installation should always be carried out by a qualified electrician or a competent person in accordance with your current electrical regulation.

The electricity supply should always be isolated at its source (fuse box) before attempting any installation or maintenance.

Please do not fit bulbs exceeding the maximum allowable wattage.

Ensure the circuit, to which the fixture is to be connected, has been installed and fused in accordance with your local electrical standards.

If the external flexible cable or cord is damaged, it should be replaced exclusively by MICHAEL ANASTASSIADES or a similar qualified person to avoid a hazard.

Please see the latest IEE Wiring Regulations for full details.

If a bulb requires replacement, always switch off the mains power and allow the fixture to cool.

Position the fixture where desired, ensuring that the area is suitable to support the weight of the fixture.

Determine the fixing method appropriate to the surface material.

Modifying any part of the fixture will void the products warranty.

MICHAEL ANASTASSIADES takes no responsibility for incorrectly installed lights & recommends that all fixtures should be installed by a qualified electrician.

## CLEANING INSTRUCTIONS

Before cleaning, lighting fixtures must be turned off and unplugged from mains electricity. Whilst cleaning please be extremely careful and use the gloves provided.

**Satin brass:** Use the Scotch Brite pad (supplied in the product box) and gently rub the pad in the direction of the grain. Repeat until the natural patina is removed. On rubbing the Scotch Brite to the brass, grains will occur. The colour of the product will temporarily get lighter until it re-oxidises.

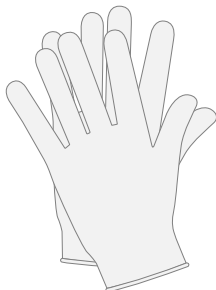
**Plated Finish:** Use a lightly damp soft dust cloth and gently go over marks until clean. Dry it afterwards with a soft dust cloth.

**Patinated Finish:** Use a dry soft dust cloth and gently go over marks until clean. The brass patina is achieved through an artisanal technique of applying pigments by hand during a hot patination process. Through this alchemic process, the brass is transformed whilst retaining the material's inherent qualities. It will mature and change overtime. The manner and speed in which it will change will depend on the environment, handling and the level and frequency of maintenance. Verdigris can also appear when the copper in the brass begins to oxidise.

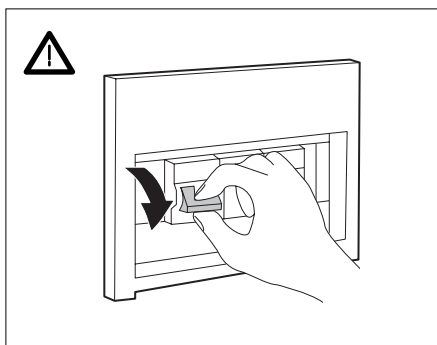
**Glass tube:** Remove the bulb from the product. Using a lightly damp cloth, clean only the outside of the tube and dry it with a dry soft dust cloth. Only put the glass bulb back on the product once it is fully dry.

## INSTALLATION PREPARATION

Whilst installing the fixture, please take care and use the gloves provided.



Turn off the electrical supply at the fuse box.



Use the guide below to ensure you follow the instructions that are relevant to your fixture.

|                          |        |                     |                |                 |        |        |        |
|--------------------------|--------|---------------------|----------------|-----------------|--------|--------|--------|
| Tube Chandelier,<br>240V | Fig.1  | Fig.2               | Fig.3a         | Fig.4a<br>or 4b | Fig.5  | Fig.6  | Fig.7  |
|                          | Fig.7  | Fig.8a,b,<br>c or d | Fig.8e<br>or f | Fig.9           | Fig.10 | Fig.11 | Fig.12 |
|                          | Fig.13 | Fig.14              | Fig.15         | Fig.16          | Fig.17 | Fig.18 |        |
| Tube Chandelier,<br>120V | Fig.1  | Fig.2               | Fig.3b         | Fig.3c          | Fig.4a | Fig.5  | Fig.6  |
|                          | Fig.7  | Fig.8a,b,<br>c or d | Fig.8e<br>or f | Fig.9           | Fig.10 | Fig.11 | Fig.12 |
|                          | Fig.13 | Fig.14              | Fig.15         | Fig.16          | Fig.17 | Fig.18 |        |

## Parts Supplied

Universal Mounting Plate  
only for 120V



J-Box Cover  
only for 120V



Fixture Bracket & Driver



Ceiling Rose Tube



Magnetic Cap



Rod Lock

## Additional Items Provided

Pair of Gloves  
Allen Key (x2)



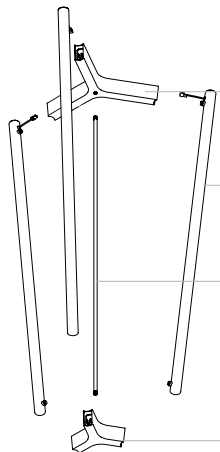
Rod A (1350mm)



Rod B (1200mm)



Rod Connector



Large Tripod with Cable

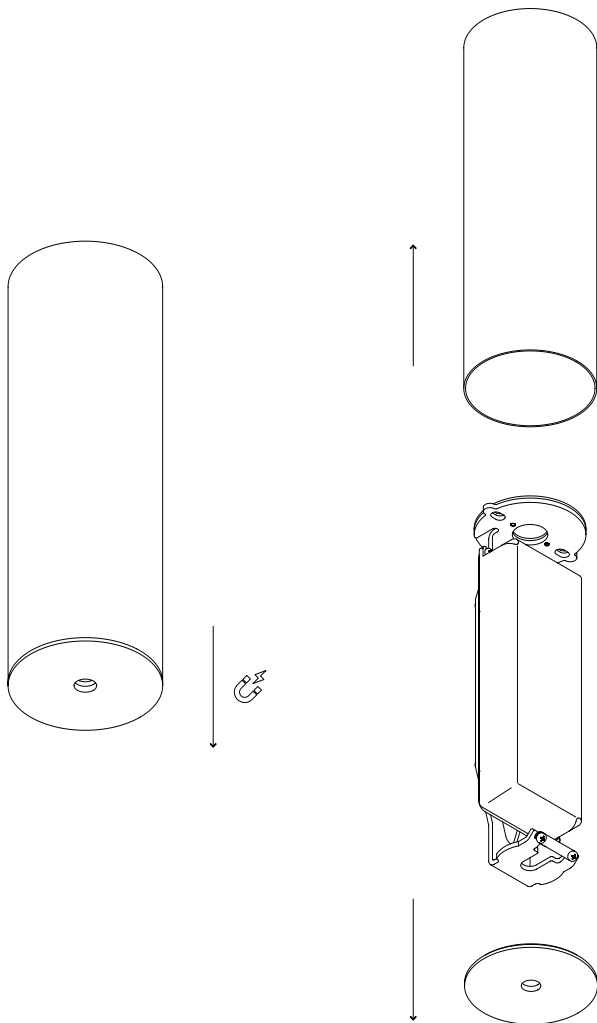
Bulb (x3)

Center Rod

Small Tripod

Fig. 1

Remove the magnetic cap and twist the ceiling rose tube until the tube can slide off the inner base.



Warning: Strong magnets, please handle carefully.



Fig. 2

Unscrew the screws from the securing bar (G).  
Remove the four screws from the back of the bracket to release the driver frame.

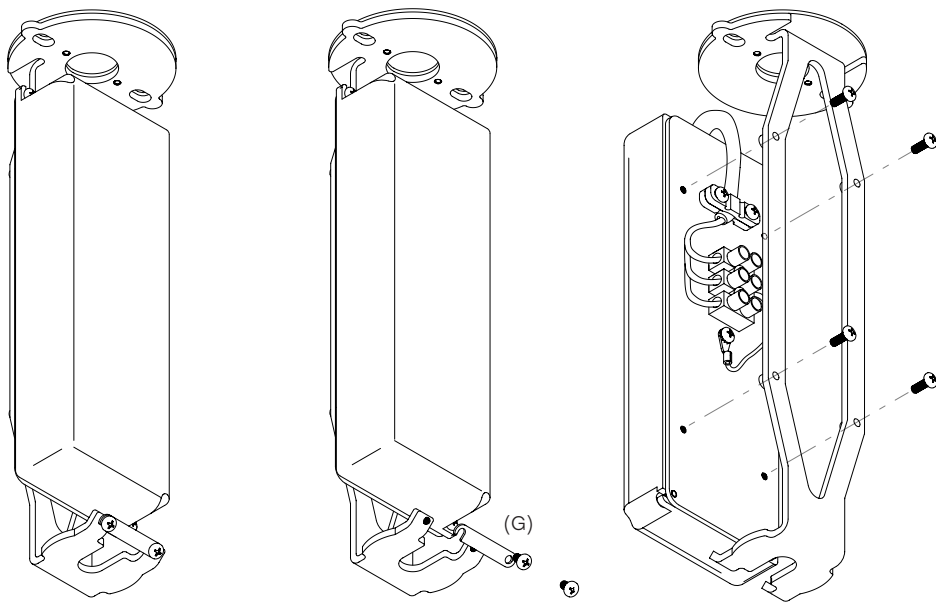


Fig. 3(a) For 240V fittings;

Insert the wall anchors in to the ceiling lining up with the slots of the fitting bracket (E).  
Pull the power cables from the ceiling through the central hole at the top of the bracket.  
Place the bracket on the ceiling and insert your screws in to the ceiling.  
Place the driver frame back on the bracket and insert the screws.

Skip to Fig.4.

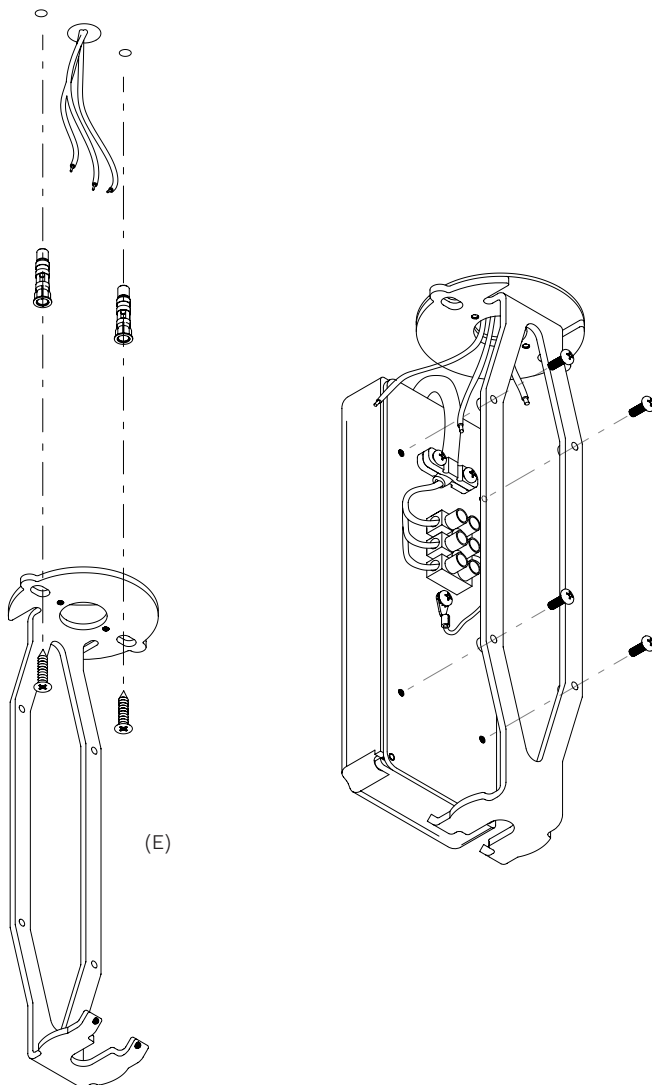
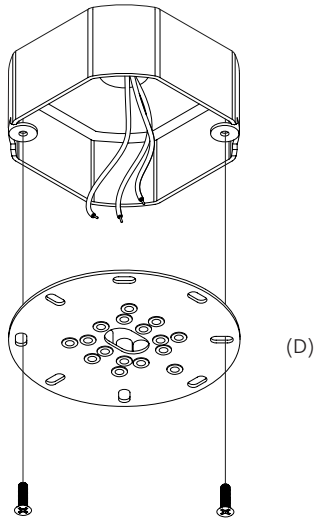


Fig. 3(b) For 120V fittings

Screw the Universal Mounting Plate (D) onto the junction box, making sure it is levelled.  
Pull live, neutral and ground cables out through the central hole.  
Mounting screws are not supplied with this fixture as J-boxes can vary.



Note: Make sure the supplied Universal Mounting Plate is fastened directly to the junction box. The surface of the junction box should be set back 1/8" or 3mm from the mounting surface. This will ensure the best possible fit for ease of installation and final finish. Note below the correct and incorrect fit for optimum installation.

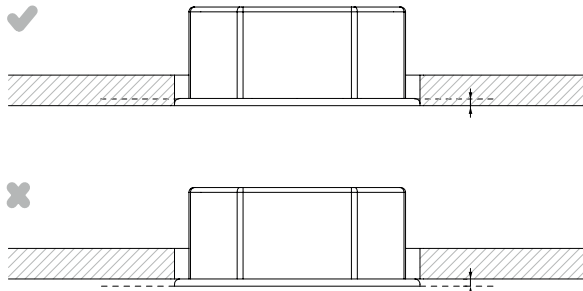
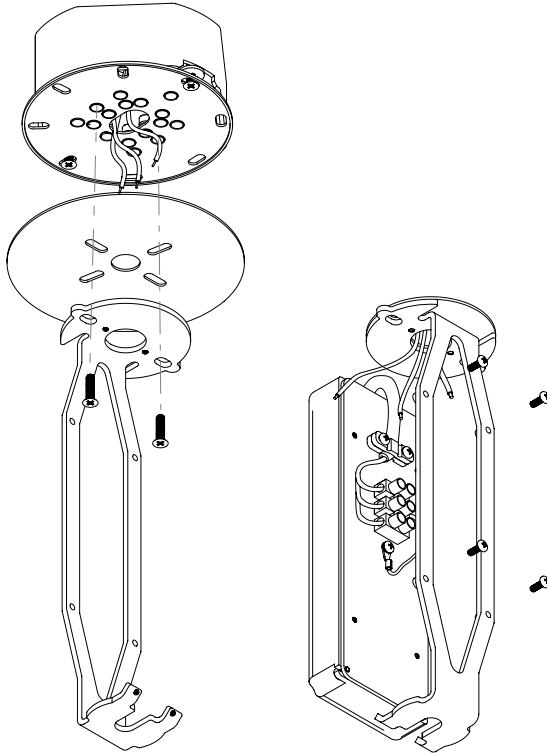


Fig. 3(c) For 120V fittings;

Place the Junction Box Plate (F) on top of the junction box, pull the power cables through the central hole and insert the screws.

Place the cover plate (G) and bracket (E) on the junction box plate and insert the screws to match the holes on the junction box plate.

Place the driver frame back on the bracket and insert the screws.



Paint over the J-box cover to match the wall finish.

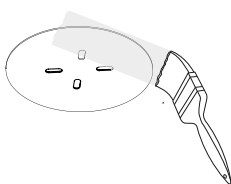


Fig. 4(a) Wiring for 0-10 or DALI

If your fixture uses 0-10 or DALI, low voltage dimming; please follow the wiring guide below.

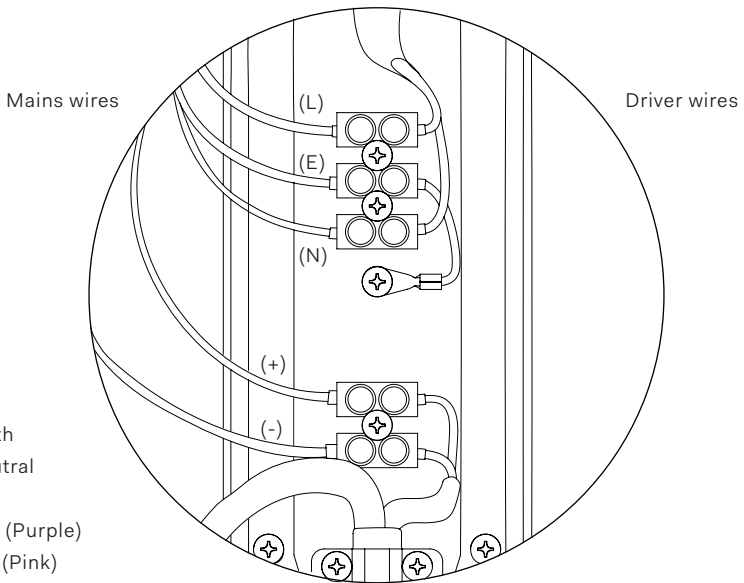
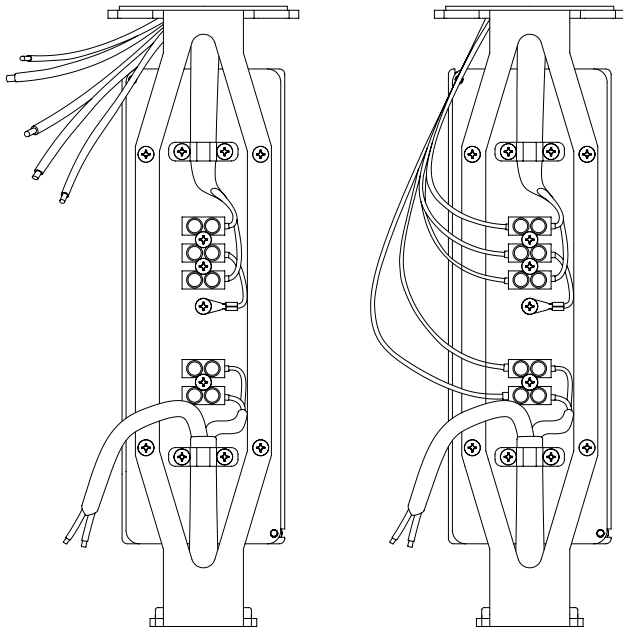
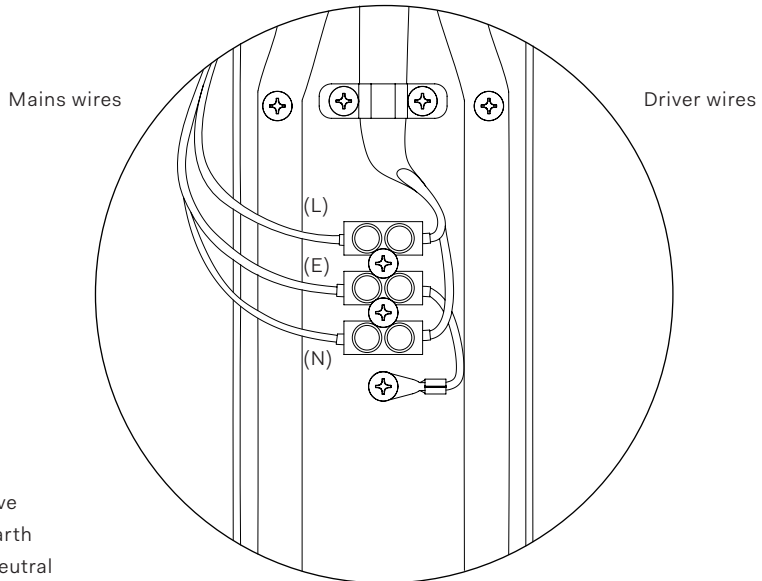
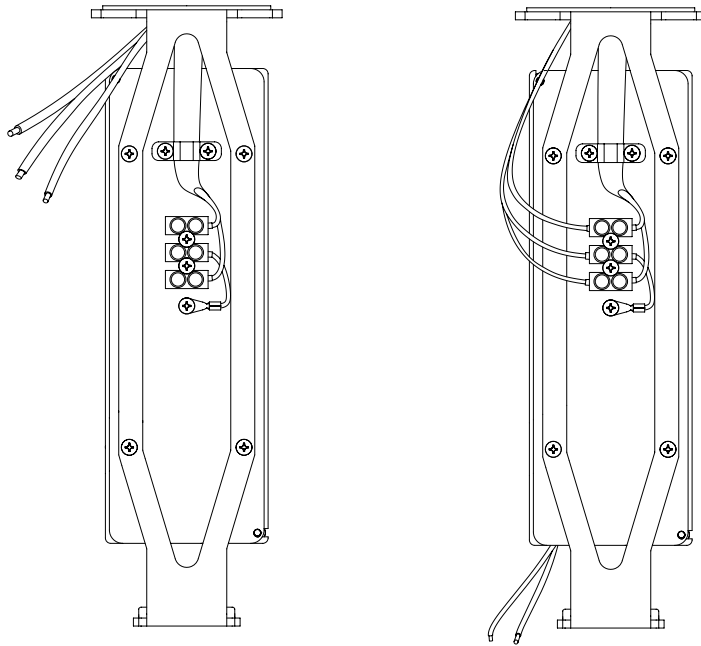


Fig. 4(b) Wiring for Triac/Cut-Phase Dimming

If your fixture is Triac/Cut-Phase dimming; please follow the wiring guide below.



- (L) Live
- (E) Earth
- (N) Neutral

Fig. 5

Slide the Ceiling Rose Tube back over the fixture bracket, ensuring the notches on both components line up.  
Once the Ceiling Rose Tube is flush with the ceiling/plate, twist the tube so that the notches do not line up.  
This will lock the tube in place.

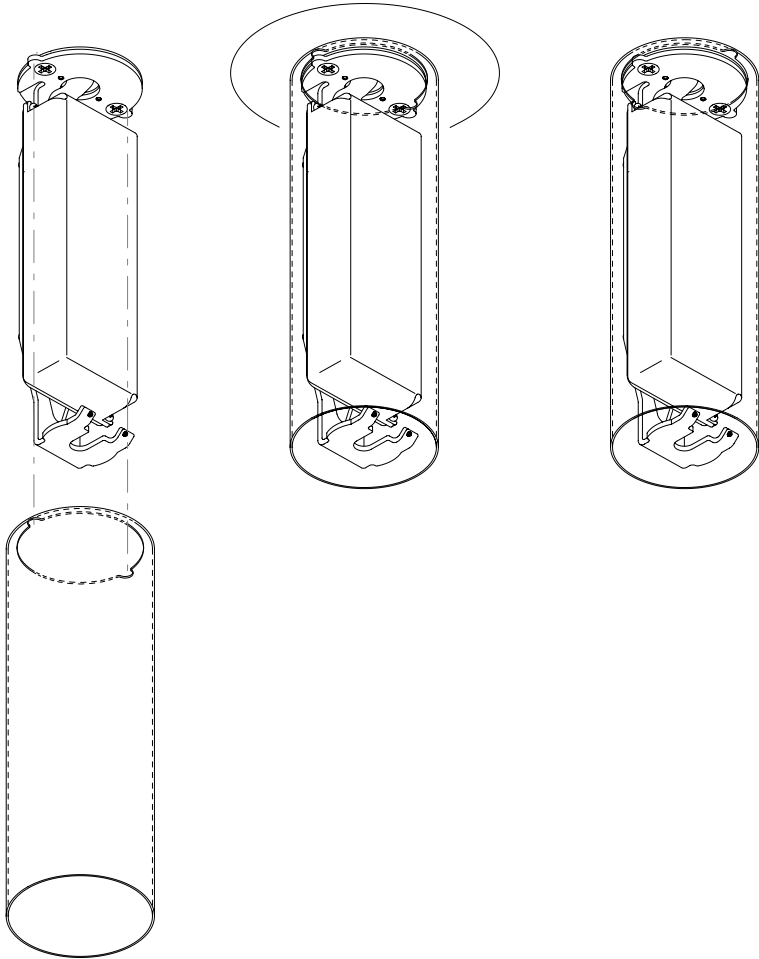


Fig. 6

If you require a specific total drop for your fixture, please follow the guide in Figure 7 to ensure you achieve your desired total drop.

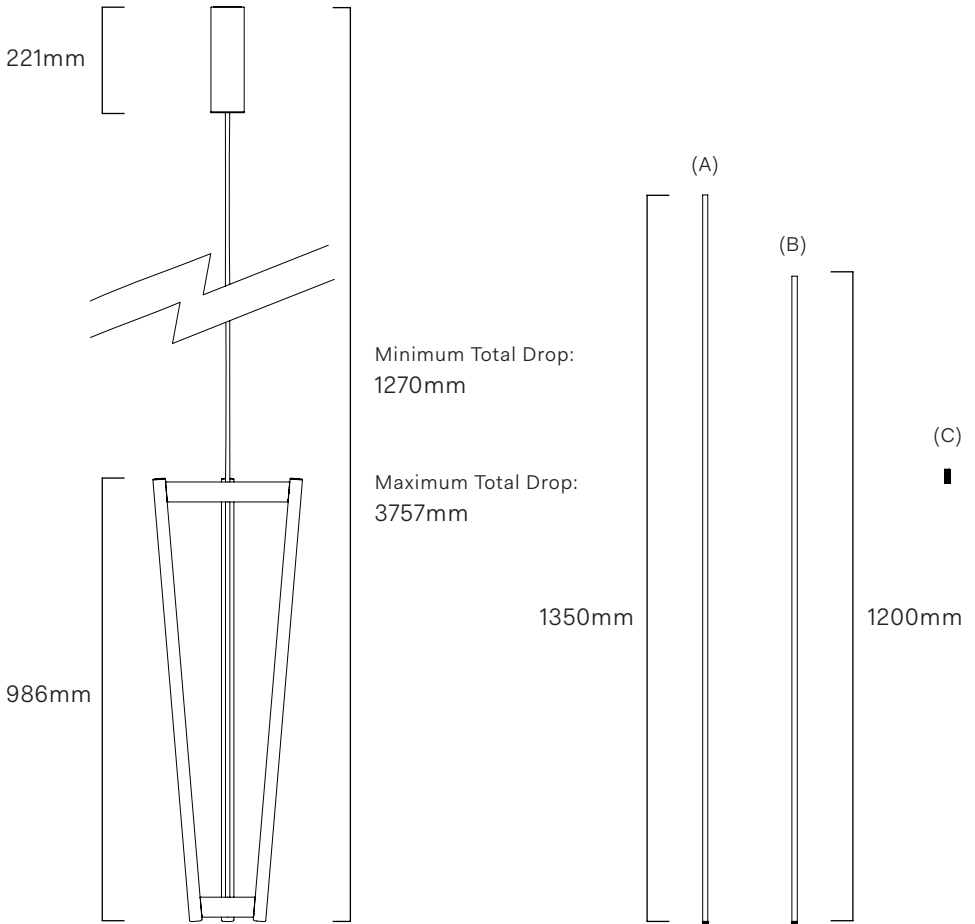




Fig. 7

The following steps will guide you to achieve the drop length of your fixture.  
Please read carefully as not all steps will apply to you.

- Fig. 8(a) will guide you to achieve the Minimum Drop of your fixture.
- Fig. 8(b) will guide you to achieve a total drop of less than 2557mm using only Rod A.
- Fig. 8(c) will guide you to achieve a total drop of greater than 2557mm using Rod A and B.
- Fig. 8(d) will guide you to achieve the Maximum Drop of your fixture.
- Fig. 8(e) and (f) will guide you to ensure ease of assembly.

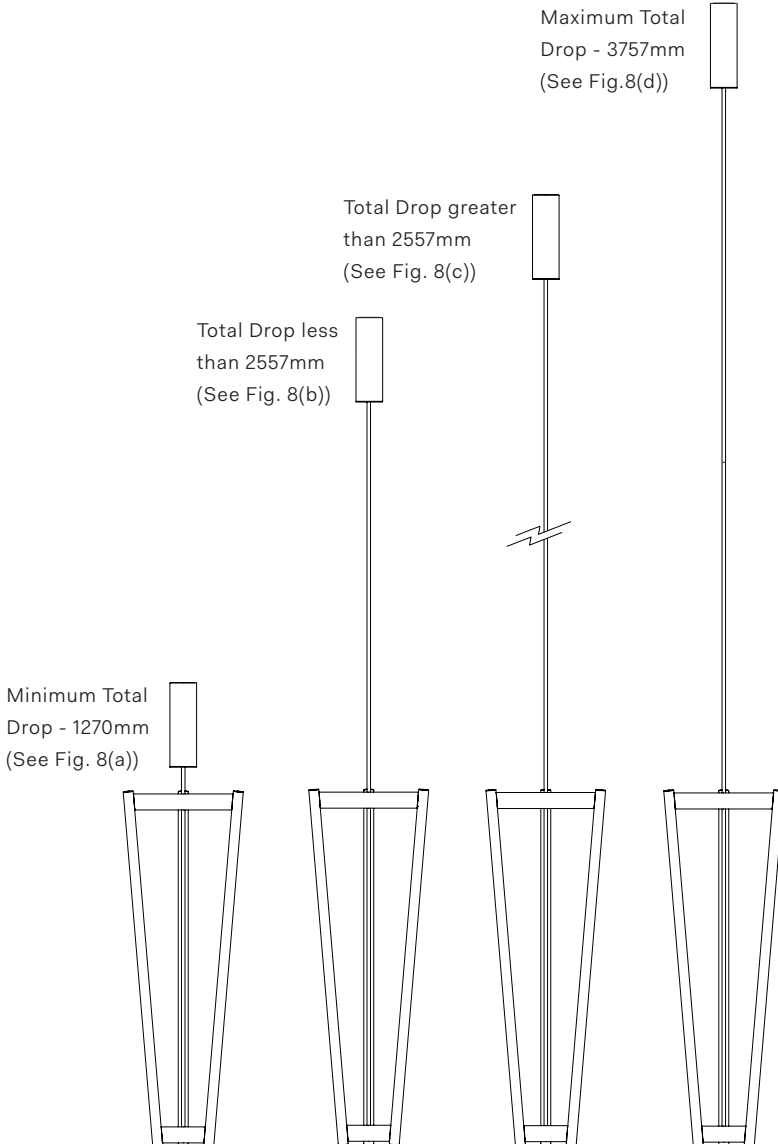


Fig. 8(a) Minimum Total Drop

To achieve Minimum Total Drop of 1270mm:  
Cut Rod (A) to 63mm in length  
measuring from the bottom.

Ensure that the male threaded end  
remains at the bottom.  
This is the section of the rod you will use.  
If the rod is cut to less than 63mm the  
fixture will not be secure.

See Fig. 8(e) for ease of assembly.

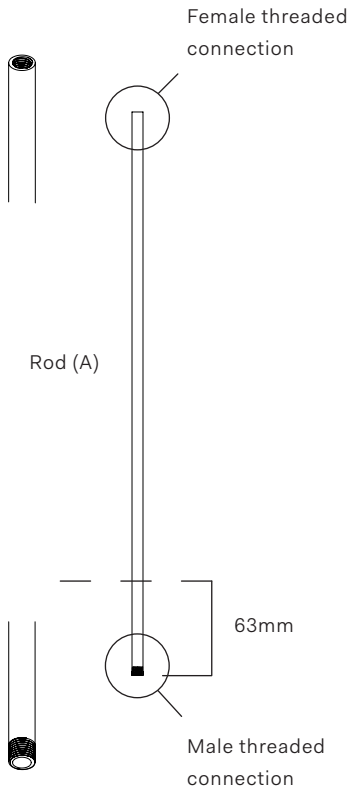


Fig. 8(b) Less than 2557mm

If desired total drop length is  
less than (<) 2557mm;

Calculate Total Desired Drop  
distance minus 1207mm.  
Cut Rod A to this measurement.

See Fig. 8(e) for ease of assembly.

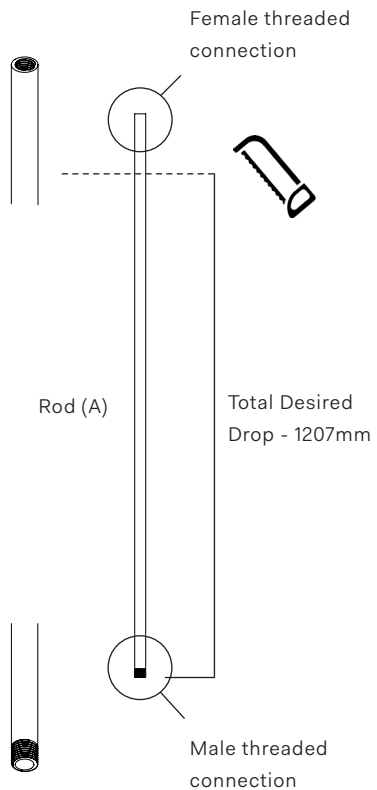


Fig. 8(c) Greater than 2557mm

If desired total drop length is greater than (>) 2557mm;

Connect Rod (A) and (B) together using the threaded connector (C). Ensure (B) is at the bottom. Calculate Total Desired Drop distance minus 1207mm. Cut Rod A to this measurement.

After cutting (A), unthread all components in to 3 separate pieces.

See Fig. 8(f) for ease of assembly.

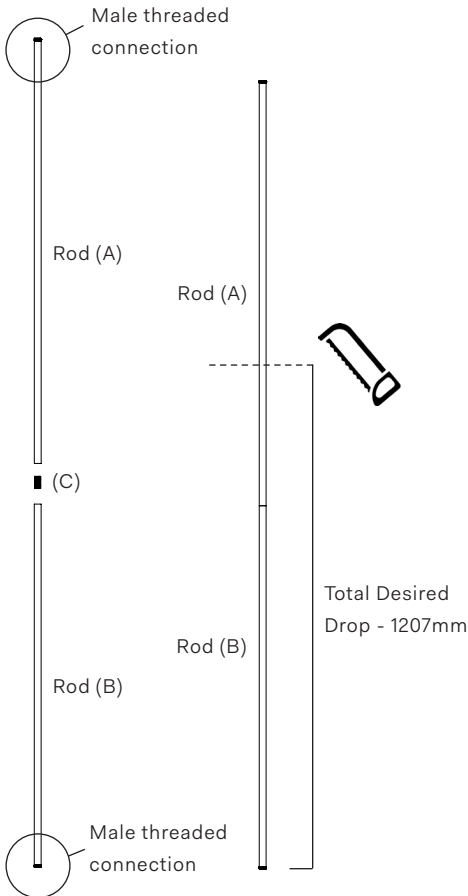


Figure. 8(d) Maximum Total Drop

To achieve Maximum Total Drop of 3757mm: Prepare Rod (A), Rod (B) and the threaded connector (C) as per image below. Ensure (B) is at the bottom.

See Fig. 8(f) for ease of assembly.

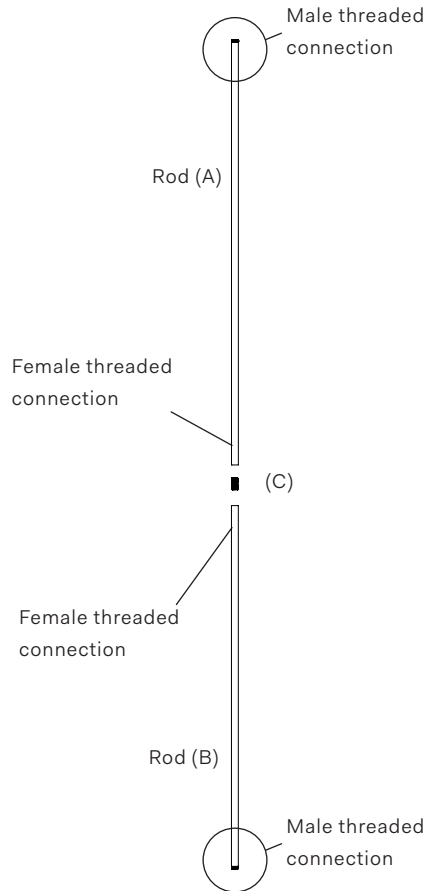


Fig. 8(e) Using only Rod A

Place the grommet in to the top of Rod (A)  
Insert the cable from the Large Tripod (D) through the bottom of Rod (A) and slide the cable until it exits from the other side.  
If you have cut Rod (A) to achieve a specific drop length, ensure that the chopped end of the rod is at the top.

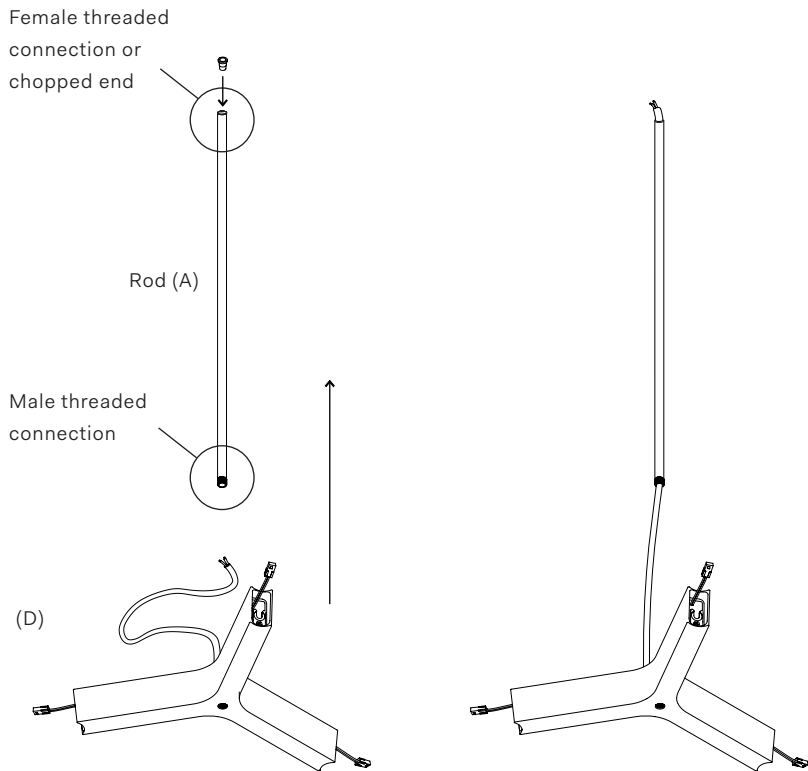


Fig. 8(f) Using both Rod (A) and (B)

Place the grommet in to the top of Rod (A).

Insert the cable from the Large Tripod (D) through the bottom of Rod (B) first, then the connector (C) and finally through the bottom of Rod (A).

If you have cut Rod (A) to achieve a specific drop length, ensure that the chopped end of the rod is at the top.

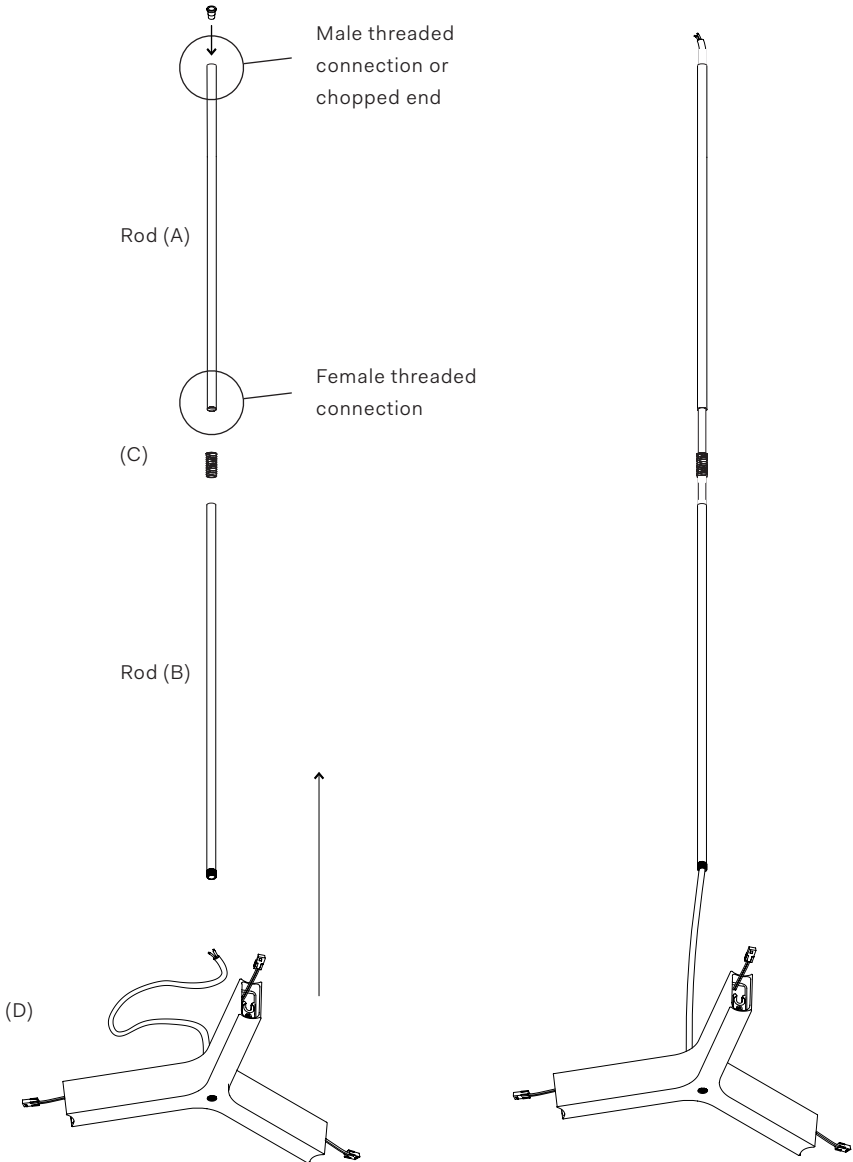


Fig. 9

Slide the rod down to meet the Large Tripod (D) and thread the tube into the component. If using both Rod (A) and (B), thread together using connector (C) first. Cut the excess cable exiting from Rod (A), ensuring there is a sufficient amount to wire the fixture.

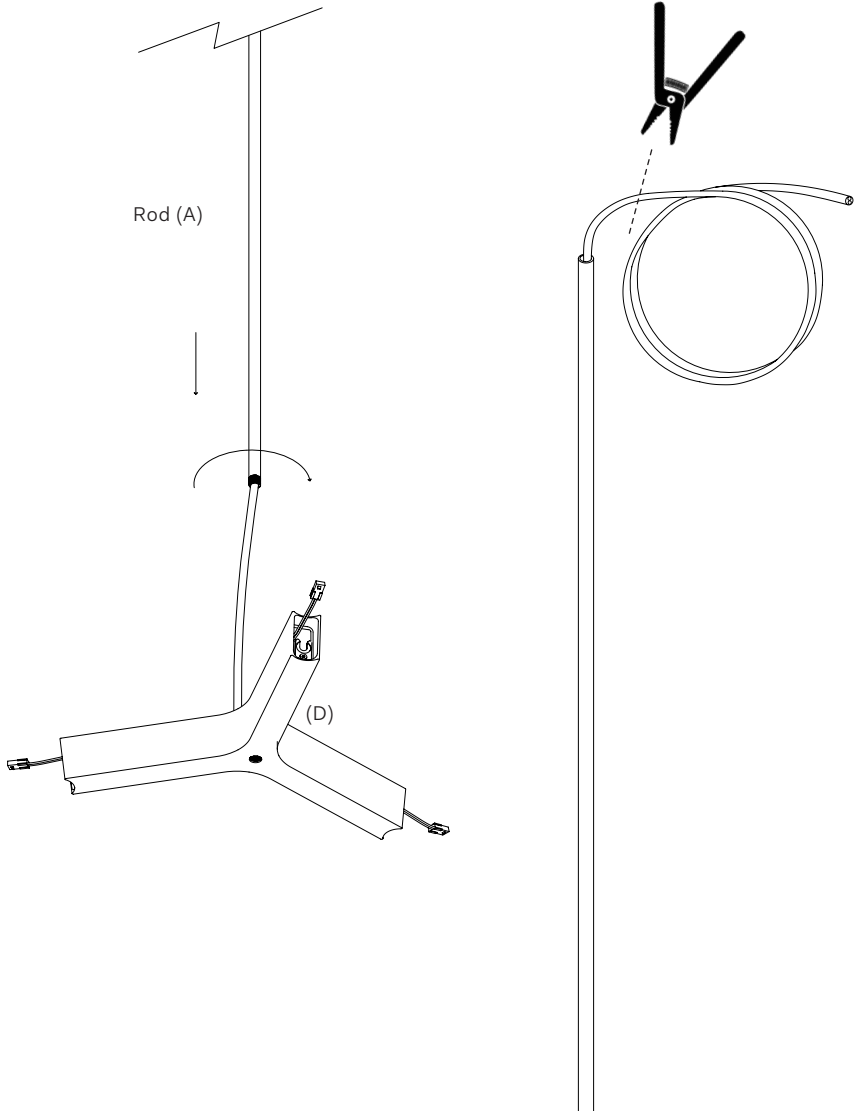


Fig. 10

Slide the magnetic cap on to Rod (A) with the magnets facing upwards.  
Slide Rod Lock (H) on to the top of Rod (A) and secure the cap to the rod using both grub screws.  
Insert the grub screws in to the screw holes on the rounded side of the cap, avoiding the flat side.

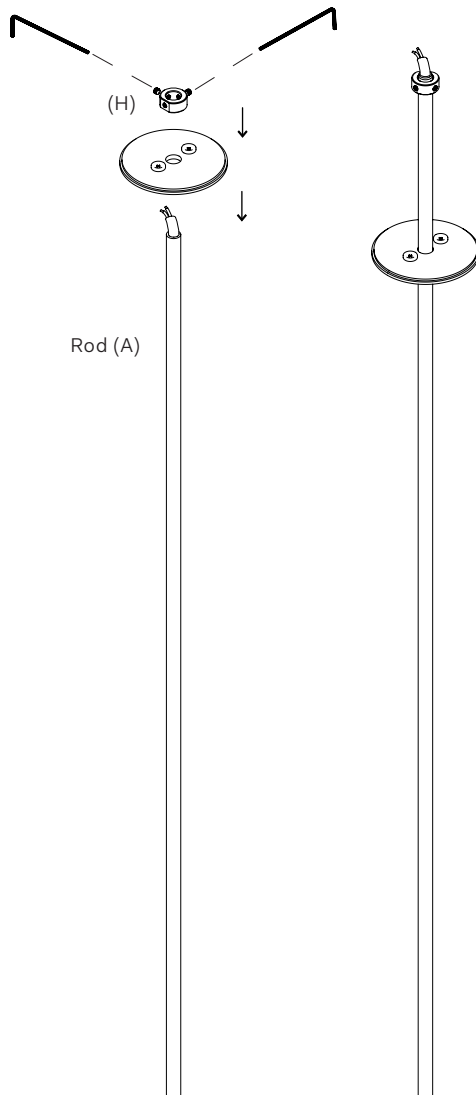


Fig. 11

Connect the positive (+) wire from the Large Tripod Cable (D) to the positive (+) wire of your driver using the connector.

Connect the negative (-) wire from the Large Tripod Cable (D) to the negative (-) wire of your driver using the connector.

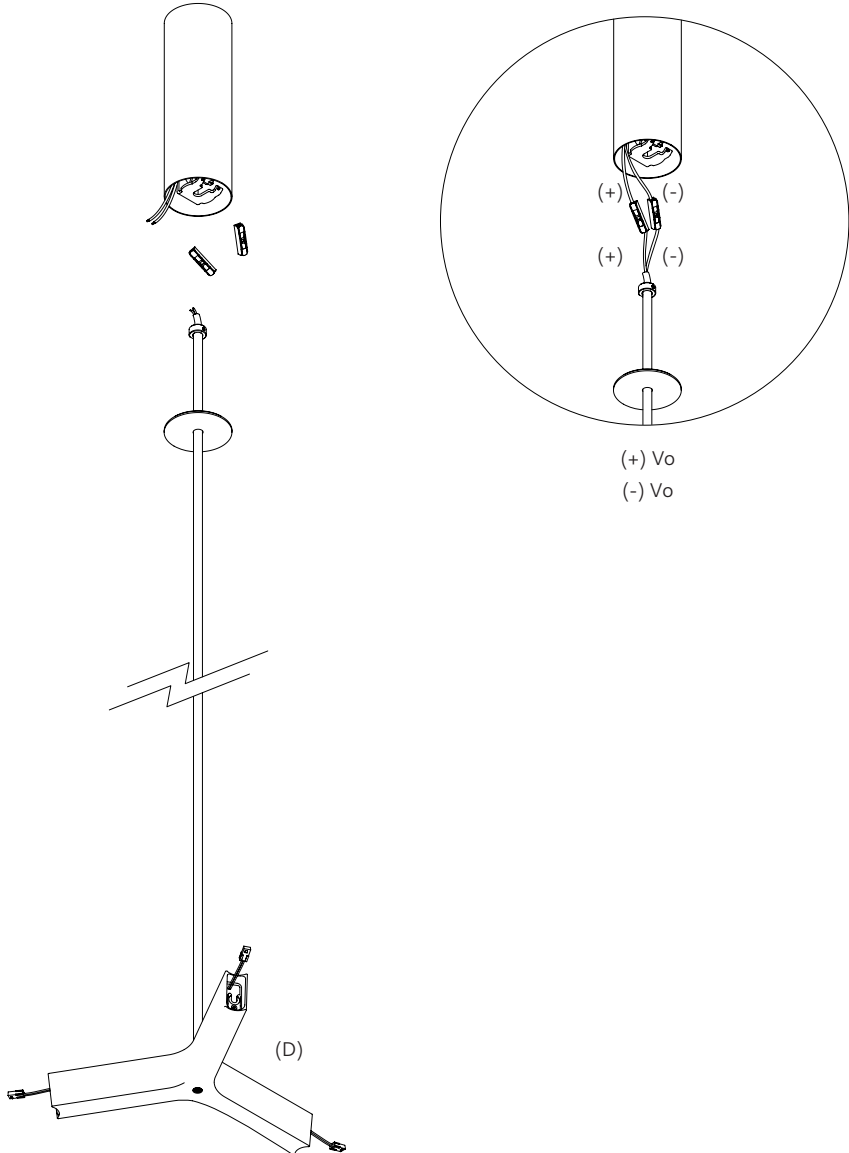




Fig. 12

Slide the cables and connectors neatly inside the Ceiling Rose Tube.

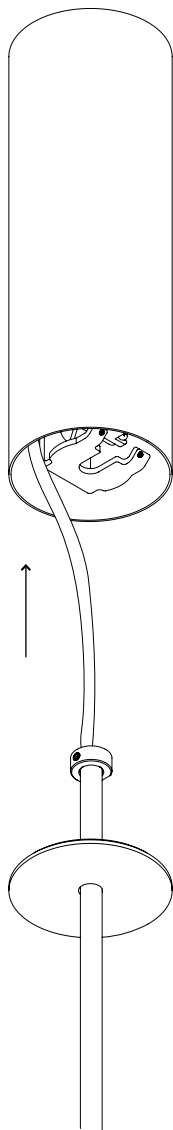


Fig. 13

Raise the tube assembly in to the Ceiling Rose Tube and seat the Rod Lock (H) into the Fitting Bracket as per IMAGE 1.  
Screw the Securing Bar (G) back in place.  
Raise the Magnetic Cap to meet the Ceiling Rose Tube.

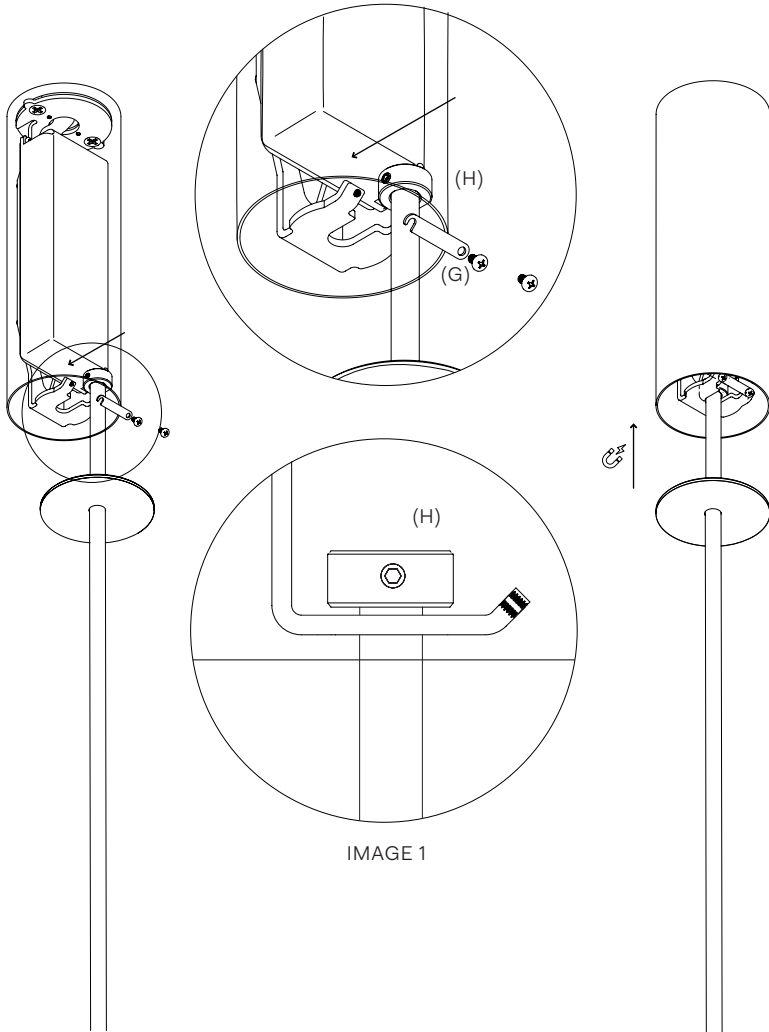


Fig. 14

Thread Center Rod (J) into the bottom of the Large Tripod (D).  
Gently tighten until secure.  
Thread the Small Tripod (K) on to the Center Rod (J).  
Gently tighten until secure.

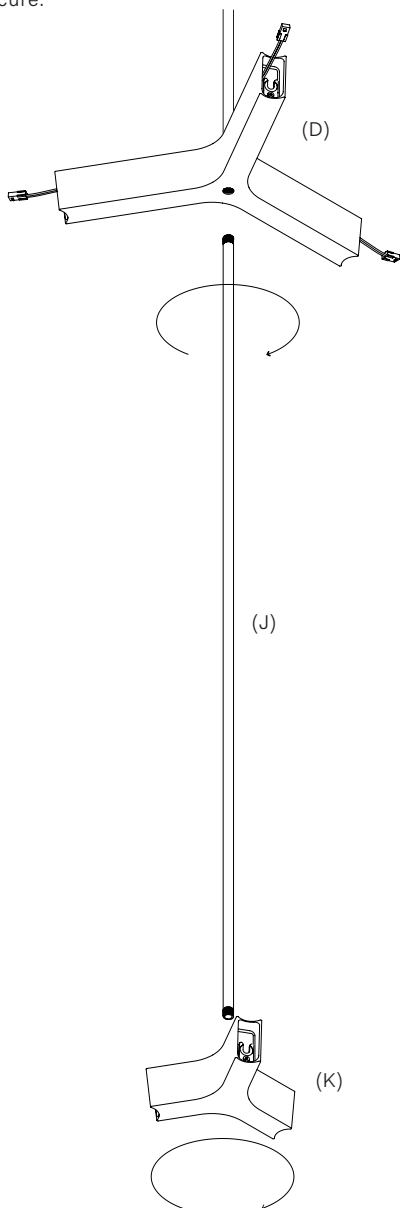


Fig. 15

Loosen the Small Tripod (K) anti-clockwise so that the bulb slots correctly line up with the bulb slots of the Large Tripod (D).

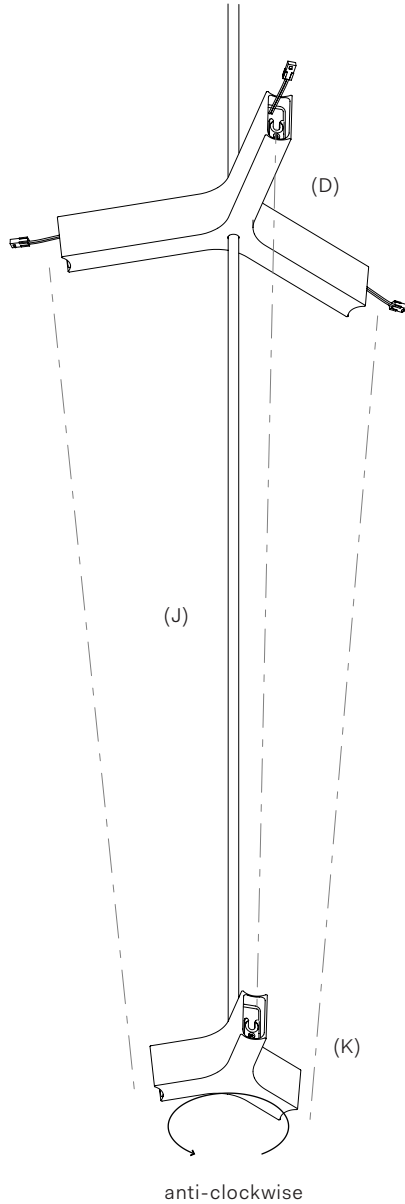


Fig. 16

Plug in each bulb (L) by connecting connector (a) to connector (b).

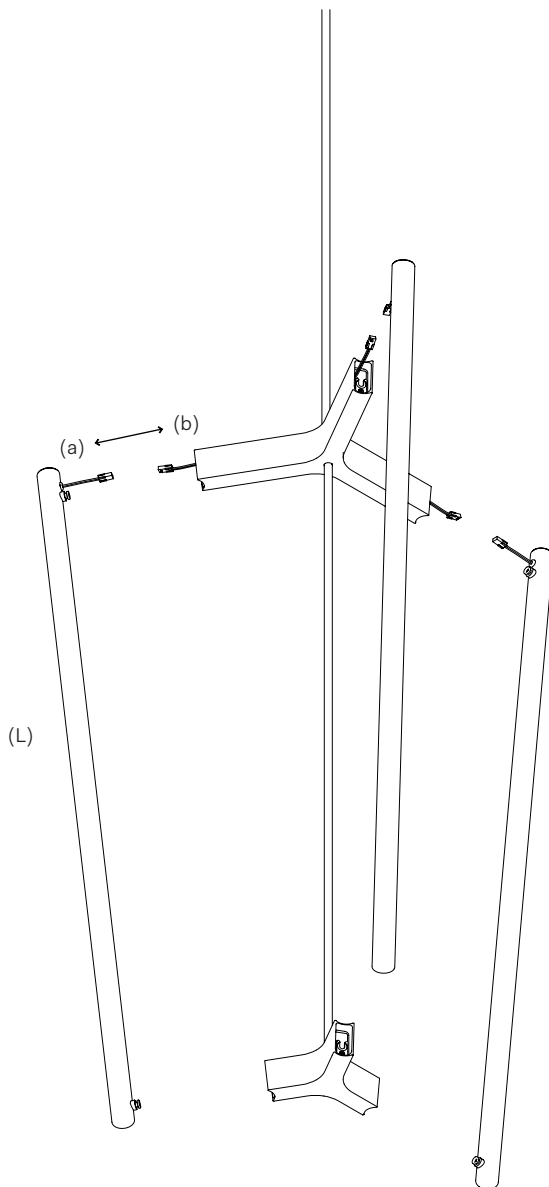


Fig. 17

Gently push the LED connectors and cable neatly inside the Top Tripod slot opening, making sure that no cable is obstructing the keyhole.

Insert the hooks (M) into the keyholes (N) at each end.

Gently push down on the bulb to slot it in place, ensuring the bulb is seated flush.

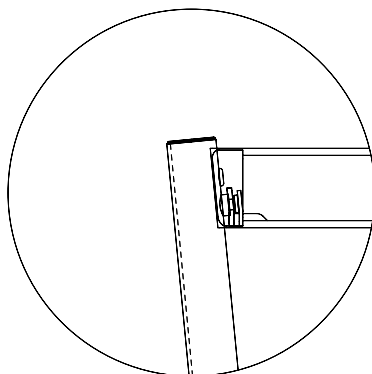
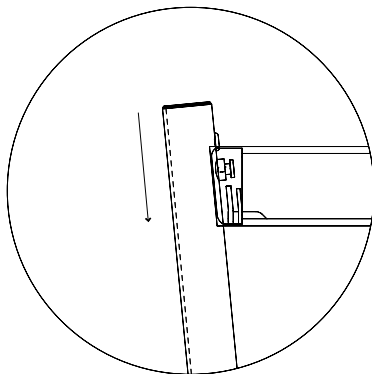
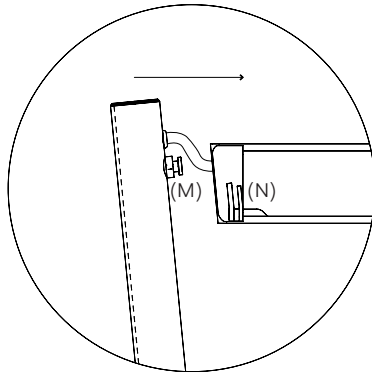
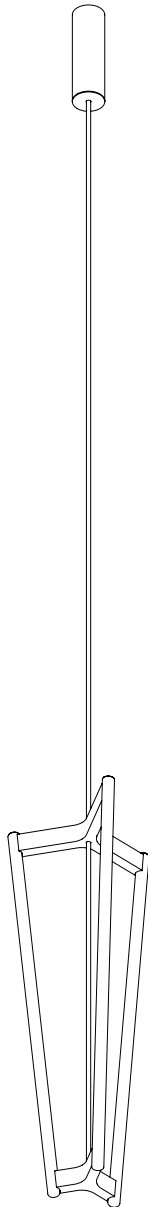


Fig. 18

Your fixture is now complete.







Michael Anastassiades' design philosophy is to preserve the inherent qualities of given material. All of our products are handmade and come in natural finishes, exposed to the elements without any protective lacquers. We look at oxidisation as part of a process that adds to the patina of an object, increasing beauty with time. We try our best for all goods to leave our premises in pristine condition, but sometimes products may arrive with minor oxidisation marks.

Whilst every effort is made to ensure accurate representation of product colours, finishes and dimensions, Michael Anastassiades Ltd reserves the right to alter these details without notice, in compliance with its own production needs, technological changes or in response to the current market needs. Colour swatches are for reference only; Michael Anastassiades Ltd cannot guarantee exact colour match for any product finishes.

All designs are protected under copyright law. Michael Anastassiades holds the exclusive manufacturing and distribution rights worldwide. Copying will be prosecuted.

All light fixtures in this catalogue have CE marking compliance.

Michael Anastassiades Ltd.  
50 Rochester Place, London NW1 9JX  
T +44 (0)20 7928 7527  
sales@michaelanastassiades.com  
www.michaelanastassiades.com  
© 2024 Michael Anastassiades Ltd. All rights reserved.

MICHAELANASTASSIADES



INSTALLATION INSTRUCTIONS



TUBE CHANDELIER, 2006 & 2024 (REMOTE, LV)

## PRODUCT SPECIFICATIONS

Bulb specification 120V / 240V  
Integrated LED 20W / 1000mm Ø 28mm  
1500lm / 2350K

Dimming protocol: Triac (240v), 0-10v or  
DALI (as per specified in the order)

Maximum wattage: 60W  
Product weight: 7kg

IP 20: Indoor Use Only  
(suitable for bathroom Zone 3)

## BEFORE INSTALLING

Please keep these instructions for future reference. Please read instructions in full prior to installation noting all illustrations. Instructions should be followed precisely.

If in any doubt about electrical safety, contact a qualified electrician.

Installation should always be carried out by a qualified electrician or a competent person in accordance with your current electrical regulation.

The electricity supply should always be isolated at its source (fuse box) before attempting any installation or maintenance. Please do not fit bulbs exceeding the maximum allowable wattage.

Ensure the circuit, to which the fixture is to be connected, has been installed and fused in accordance with your local electrical standards.

If the external flexible cable or cord is damaged, it should be replaced exclusively by MICHAEL ANASTASSIADES or a similar qualified person to avoid a hazard.

Please see the latest IEE Wiring Regulations for full details.

If a bulb requires replacement, always switch off the mains power and allow the fixture to cool.

Position the fixture where desired, ensuring that the area is suitable to support the weight of the fixture.

Determine the fixing method appropriate to the surface material.

Modifying any part of the fixture will void the products warranty.

MICHAEL ANASTASSIADES takes no responsibility for incorrectly installed lights & recommends that all fixtures should be installed by a qualified electrician.

## CLEANING INSTRUCTIONS

Before cleaning, lighting fixtures must be turned off and unplugged from mains electricity. Whilst cleaning please be extremely careful and use the gloves provided.

**Satin brass:** Use the Scotch Brite pad (supplied in the product box) and gently rub the pad in the direction of the grain. Repeat until the natural patina is removed. On rubbing the Scotch Brite to the brass, grains will occur. The colour of the product will temporarily get lighter until it re-oxidises.

**Plated Finish:** Use a lightly damp soft dust cloth and gently go over marks until clean. Dry it afterwards with a soft dust cloth.

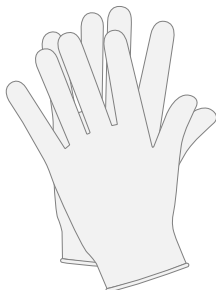
**Patinated Finish:** Use a dry soft dust cloth and gently go over marks until clean. The brass patina is achieved through an artisanal technique of applying pigments by hand during a hot patination process. Through this alchemic process, the brass is transformed whilst retaining the material's inherent qualities. It will mature and change overtime. The manner and speed in which it will change will depend on the environment, handling and the level and frequency of maintenance. Verdigris can also appear when the copper in the brass begins to oxidise.

**Glass tube:** Remove the bulb from the product. Using a lightly damp cloth, clean only the outside of the tube and dry it with a dry soft dust cloth. Only put the glass bulb back on the product once it is fully dry.

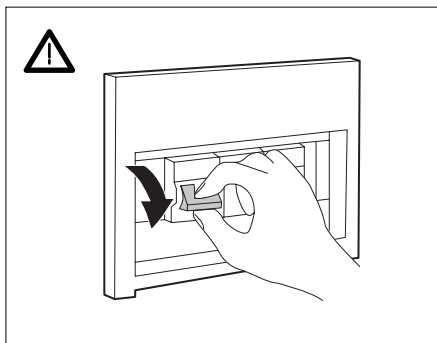


## INSTALLATION PREPARATION

Whilst installing the fixture, please take care and use the gloves provided.



Turn off the electrical supply at the fuse box.

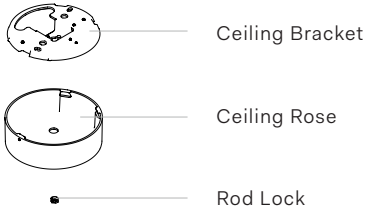
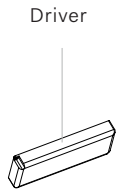


Use the guide below to ensure you follow the instructions that are relevant to your fixture.

|                                  |                |                |        |        |        |        |                     |
|----------------------------------|----------------|----------------|--------|--------|--------|--------|---------------------|
| Tube Chandelier,<br>Remote, 240V | Fig.1          | Fig.2a<br>or b | Fig.3  | Fig.4  | Fig.6  | Fig.7  | Fig.8a,b,<br>c or d |
|                                  | Fig.8e<br>or f | Fig.9          | Fig.10 | Fig.11 | Fig.12 | Fig.13 | Fig.14              |
|                                  | Fig.15         | Fig.16         | Fig.17 | Fig.18 | Fig.19 | Fig.20 |                     |
| Tube Chandelier,<br>Remote, 120V | Fig.1          | Fig.2b         | Fig.3  | Fig.5  | Fig.6  | Fig.7  | Fig.8a,b,<br>c or d |
|                                  | Fig.8e<br>or f | Fig.9          | Fig.10 | Fig.11 | Fig.12 | Fig.13 | Fig.14              |
|                                  | Fig.15         | Fig.16         | Fig.17 | Fig.18 | Fig.19 | Fig.20 |                     |



## Parts Supplied



## Additional Items Provided

Pair of Gloves  
Allen Key (x2)

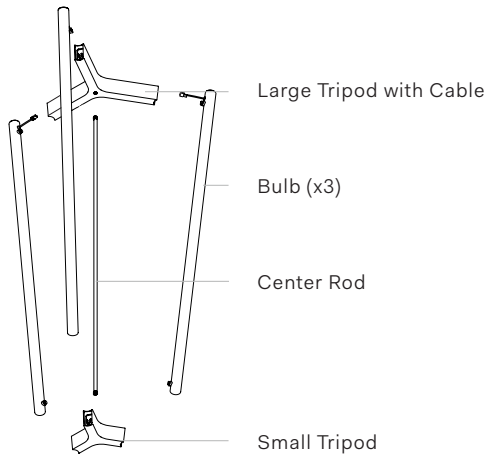
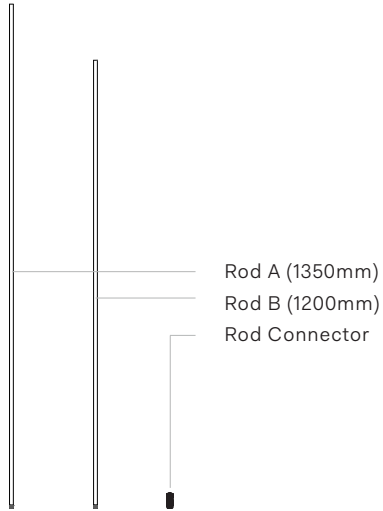


Fig. 1

Please follow the following wiring diagram to correctly wire from your mains through your remote driver to power your fixture.

Fig. 2(a) will guide you to wire your 0-10 or DALI fixture.

Fig. 2(b) will guide you to wire your Triac/Cut-Phase dimming fixture.

Please only use the guide relevant to your fixture.

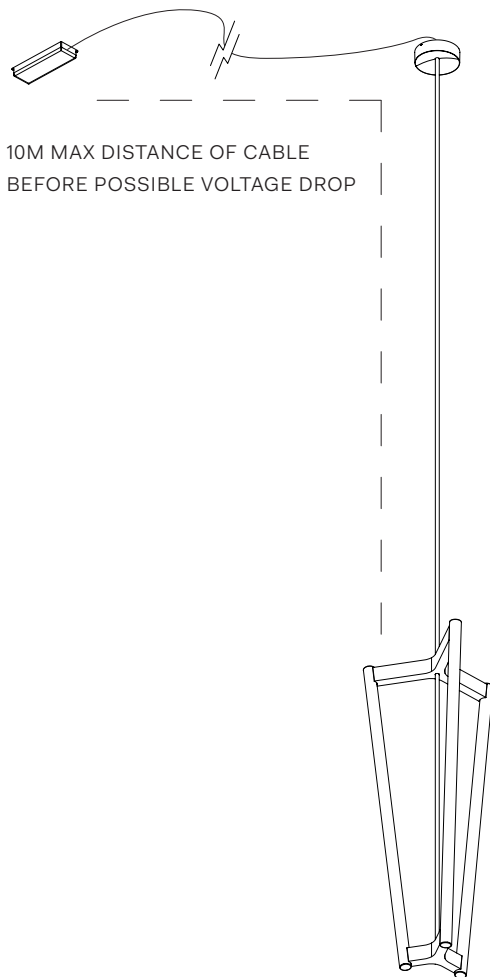


Fig. 2(a) Wiring for 0-10 or DALI

If your fixture uses 0-10 or DALI, low voltage dimming; please follow the wiring guide below.

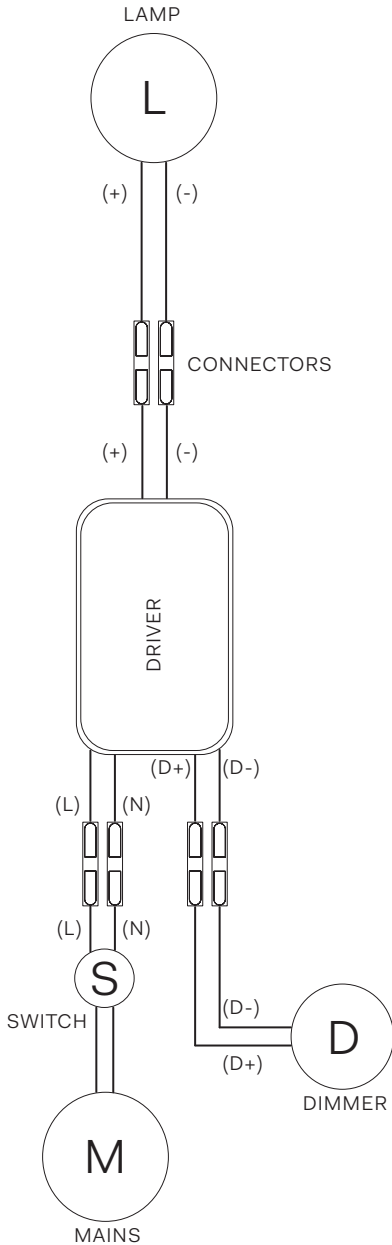


Fig. 2(b) Wiring for Triac

If your fixture is Triac/Cut-Phase dimming; please follow the wiring guide below.

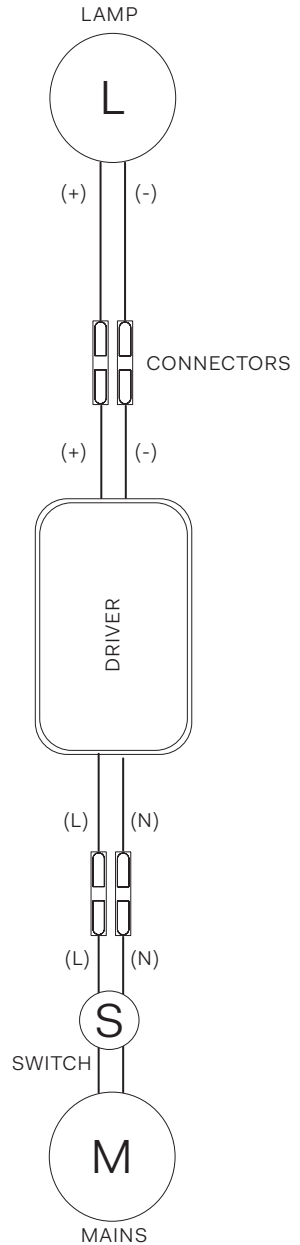
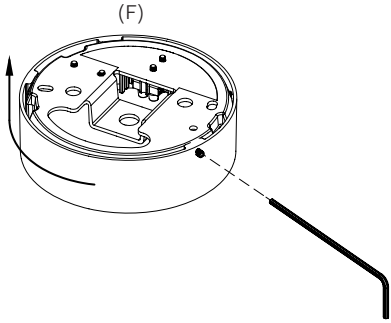
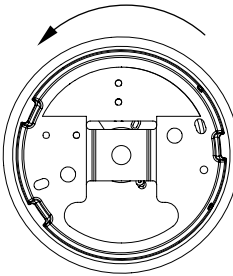
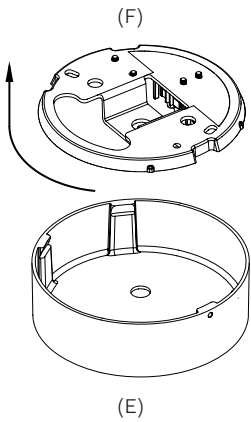
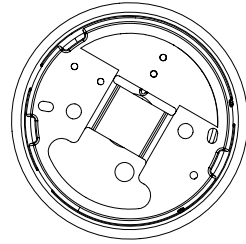


Fig. 3

Loosen the grub screw from your Ceiling Rose Cover using the allen key provided.  
Rotate the Fixture Bracket Cover (E) anti-clockwise to unlock and release from the backplate (F).



TOP VIEW LOCKED



TOP VIEW UNLOCKED

Fig. 4 For 240V Fittings

Insert the wall anchors in to the ceiling lining up with the slots of the fitting bracket (F).  
Pull the power cables from the ceiling through the central hole at the top of the bracket.  
Place the bracket on the ceiling and insert your screws in to the ceiling.

Wall anchors and mounting screws are not supplied for this fixture. Determine the fixing method appropriate to the surface material before starting the project. Use fixings that are suited to the surface material and are sufficient to bear the weight of the light.

Go to Fig.6 for next step.

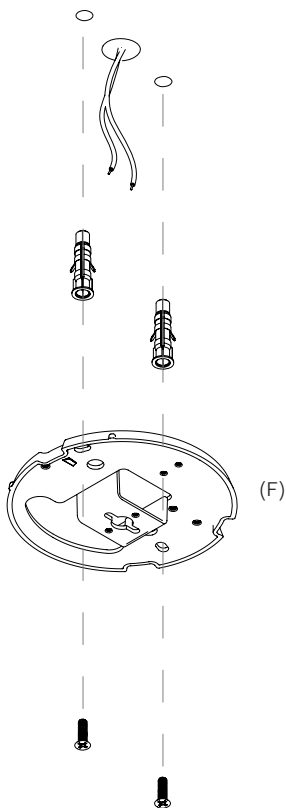


Fig. 5 For 120V Fittings

Screw the Fixture Bracket (F) onto the junction box, making sure it is levelled.  
Pull power cables through the central hole.  
Mounting screws are not supplied with this fixture as J-boxes can vary.

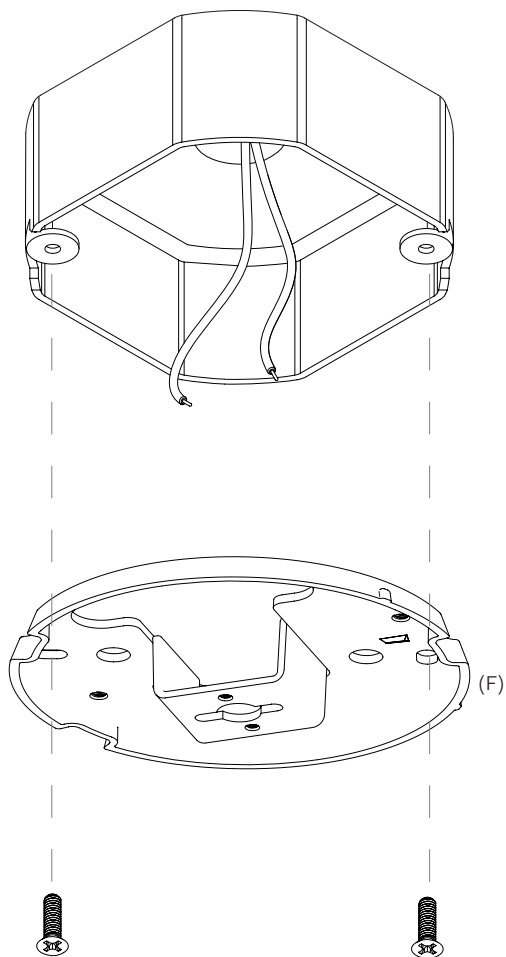


Fig. 6

If you require a specific total drop for your fixture, please follow the guide in Figure 7 to ensure you achieve your desired total drop.

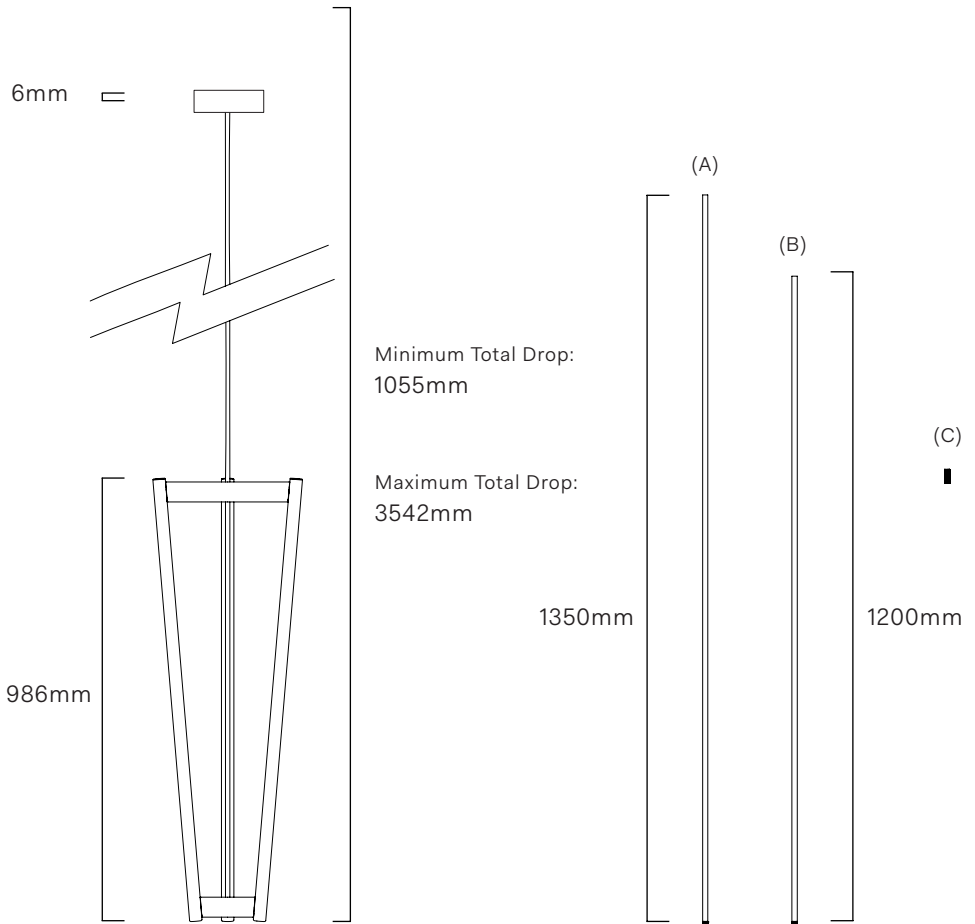


Fig. 7

The following steps will guide you to achieve the drop length of your fixture.  
Please read carefully as not all steps will apply to you.

Fig. 8(a) will guide you to achieve the Minimum Drop of your fixture.

Fig. 8(b) will guide you to achieve a total drop of less than 2342mm using only Rod A.

Fig. 8(c) will guide you to achieve a total drop of greater than 2342mm using Rod A and B.

Fig. 8(d) will guide you to achieve the Maximum Drop of your fixture.

Fig. 8(e) and (f) will guide you to ensure ease of assembly.

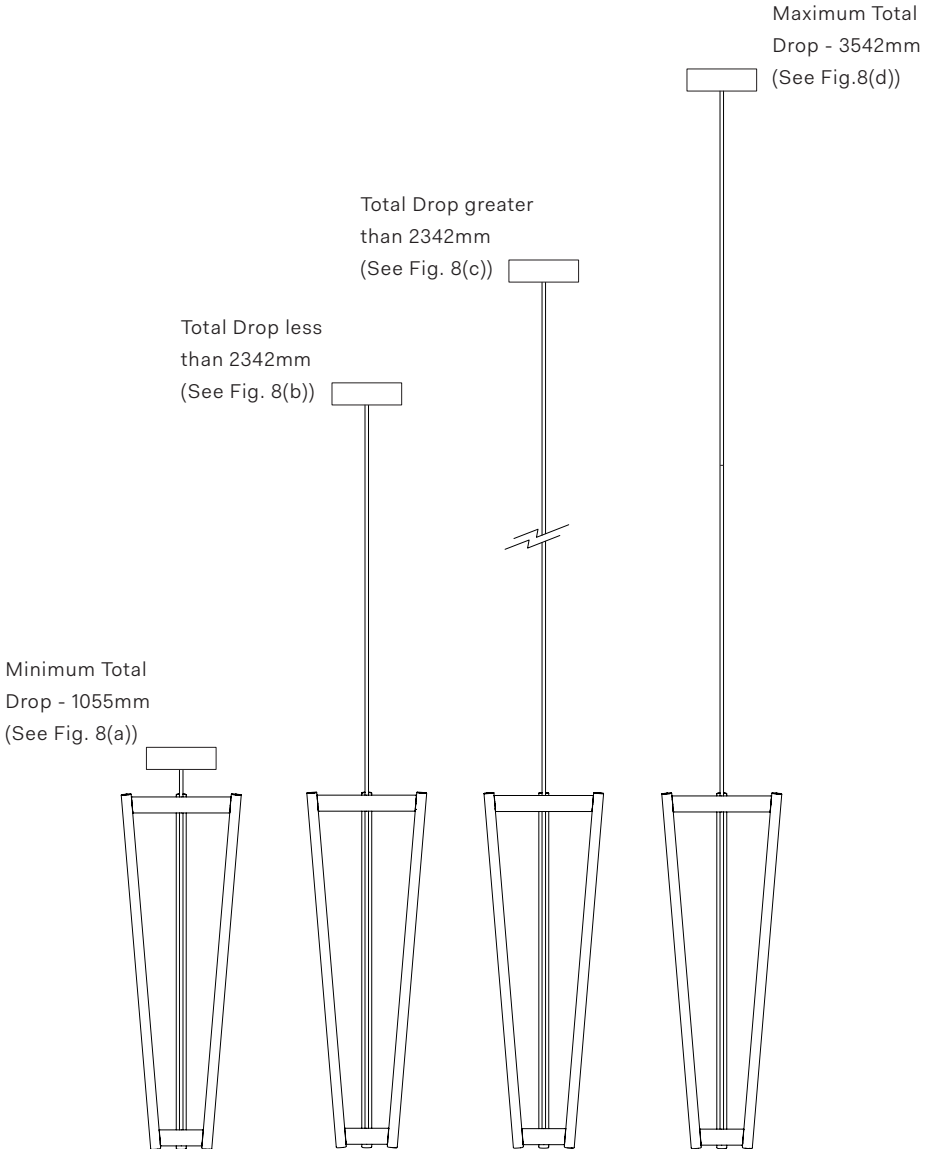




Fig. 8(a) Minimum Total Drop

To achieve Minimum Total Drop of 1055mm:  
Cut Rod (A) to 63mm in length  
measuring from the bottom.

Ensure that the male threaded end  
remains at the bottom.  
This is the section of the rod you will use.  
If the rod is cut to less than 63mm the  
fixture will not be secure.

See Fig. 8(e) for ease of assembly.

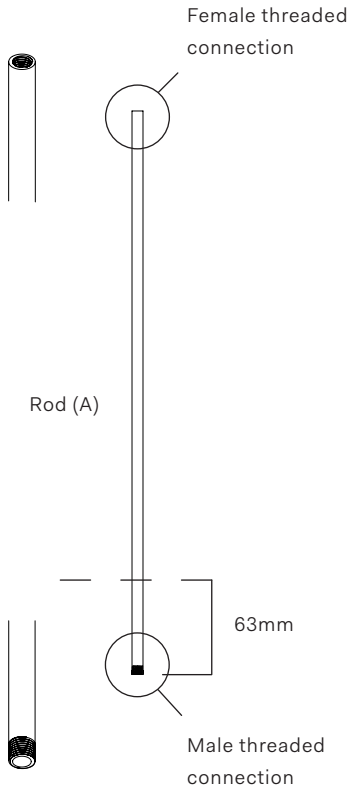


Fig. 8(b) Less than 2342mm

If desired total drop length is  
less than (<) 2342mm;

Calculate Total Desired Drop  
distance minus 1992mm.  
Cut Rod A to this measurement.

See Fig. 8(e) for ease of assembly.

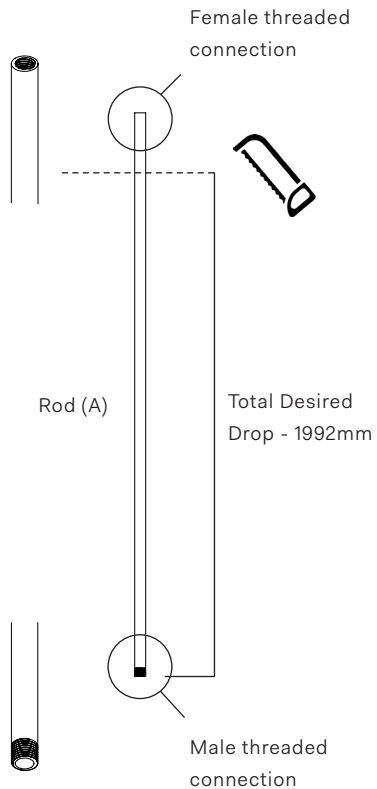


Fig. 8(c) Greater than 2342mm

If desired total drop length is greater than (>) 2342mm;

Connect Rod (A) and (B) together using the threaded connector (C). Ensure (B) is at the bottom. Calculate Total Desired Drop distance minus 1992mm. Cut Rod A to this measurement.

After cutting (A), unthread all components in to 3 separate pieces.

See Fig. 8(f) for ease of assembly.

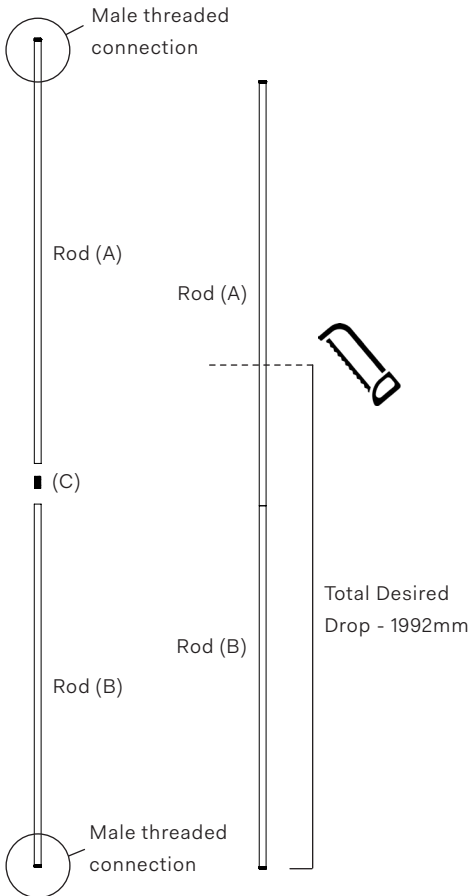


Figure. 8(d) Maximum Total Drop

To achieve Maximum Total Drop of 3542mm: Prepare Rod (A), Rod (B) and the threaded connector (C) as per image below. Ensure (B) is at the bottom.

See Fig. 8(f) for ease of assembly.

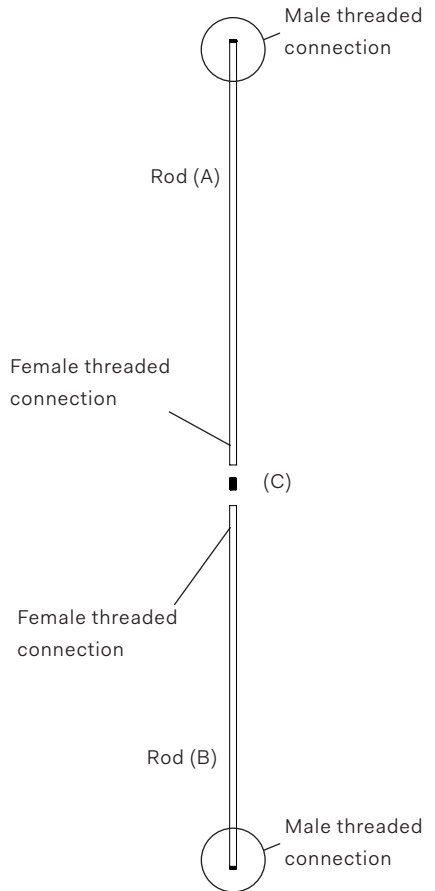


Fig. 8(e) Using only Rod A

Place the grommet in to the top of Rod (A)  
Insert the cable from the Large Tripod (D) through the bottom of Rod (A) and slide the cable until it exits from the other side.  
If you have cut Rod (A) to achieve a specific drop length, ensure that the chopped end of the rod is at the top.

Go to Fig. 9 for next step.

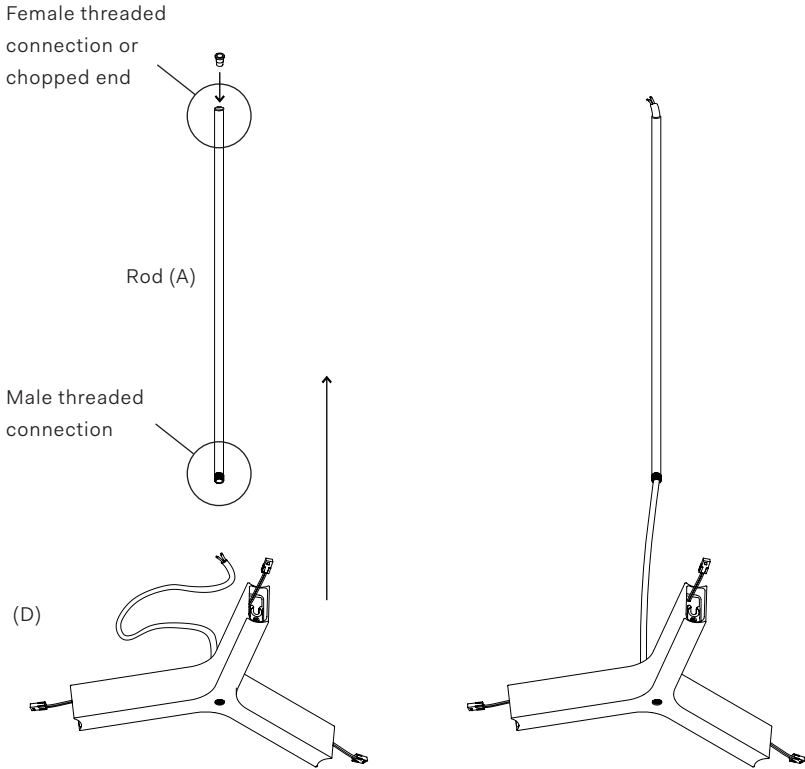


Fig. 8(f) Using both Rod (A) and (B)

Place the grommet in to the top of Rod (A).

Insert the cable from the Large Tripod (D) through the bottom of Rod (B) first, then the connector (C) and finally through the bottom of Rod (A).

If you have cut Rod (A) to achieve a specific drop length, ensure that the chopped end of the rod is at the top.

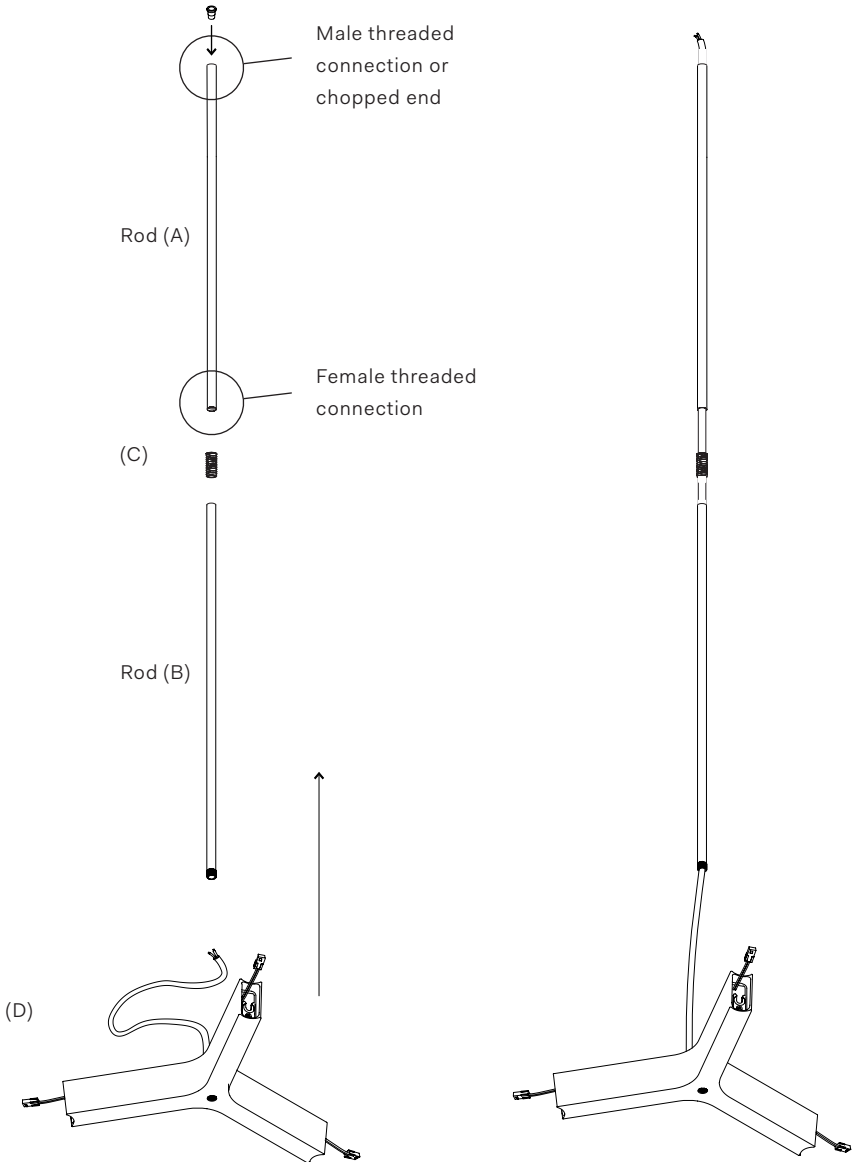


Fig. 9

Slide the rod down to meet the Large Tripod (D) and thread the tube into the component. If using both Rod (A) and (B), thread together using connector (C) first.

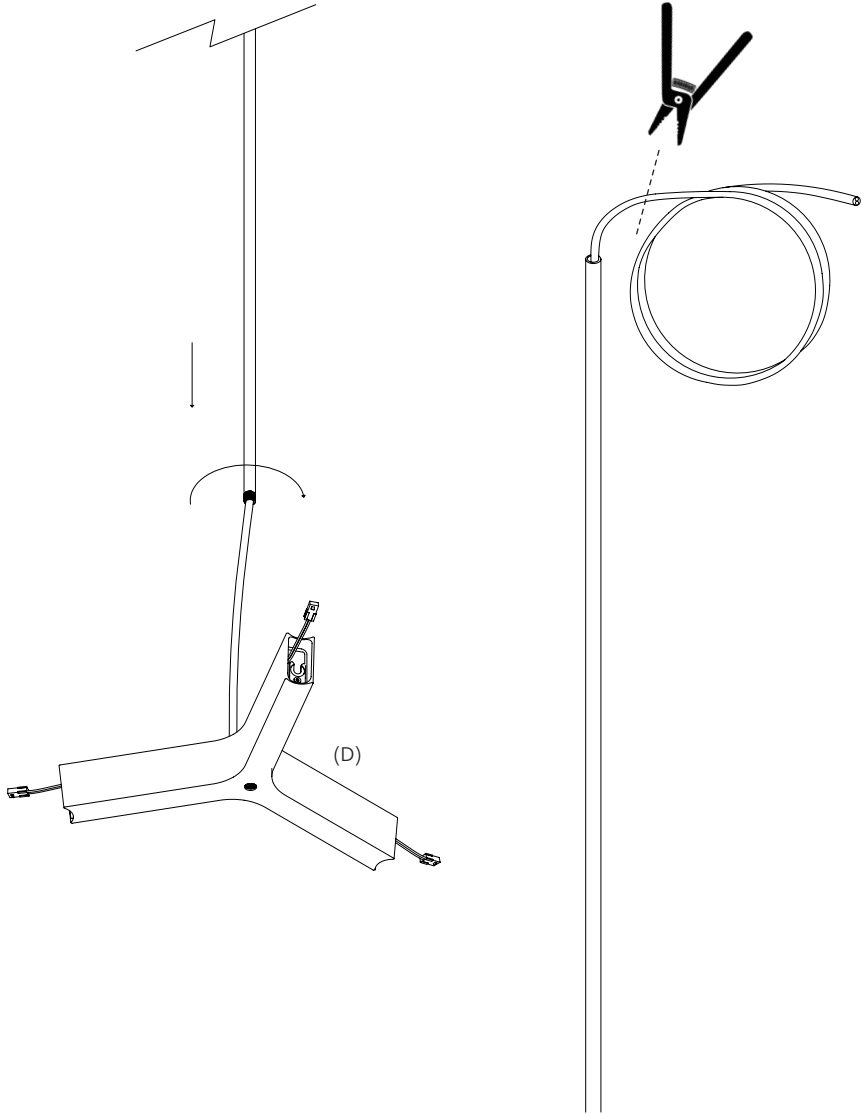


Fig. 10

Slide the Fixture Bracket Cover on to Rod (A) with the cavity facing upwards. Place to the side to prepare the Fixture Bracket.

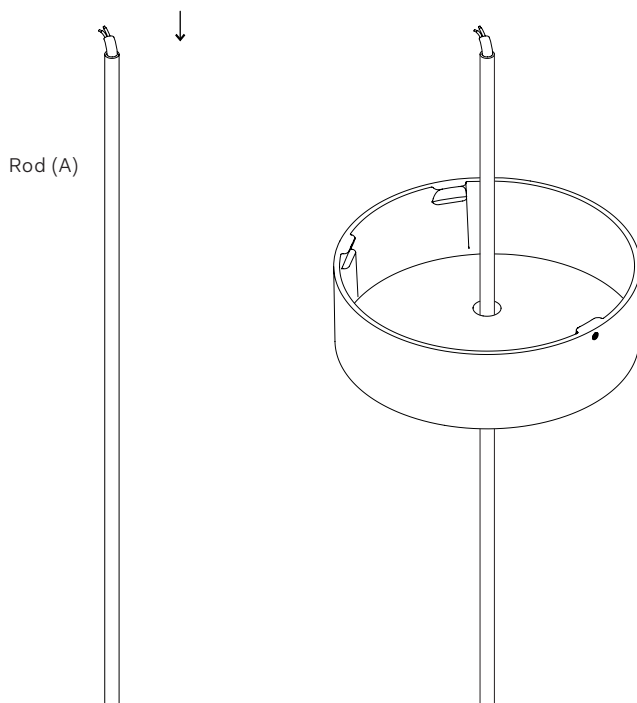
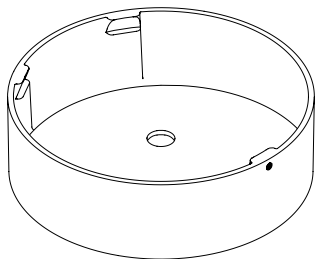


Fig. 11

After the Fixture Bracket is fixed to the ceiling, pull the driver cable out to the side. Slot the Rod Lock underneath the cable in to the slot of the Fixture Bracket.

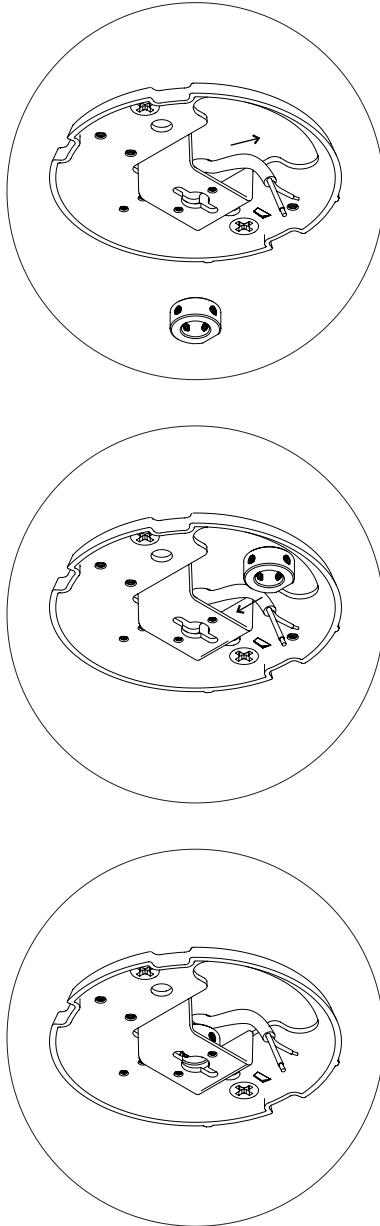


Fig. 12

Slide Rod (A) in to the center hole of the Fixture Bracket.  
Once the top of Rod (A) is flush with the top of the Rod Lock,  
use the allen key to tighten the grub screws, securing  
Rod (A) in place.

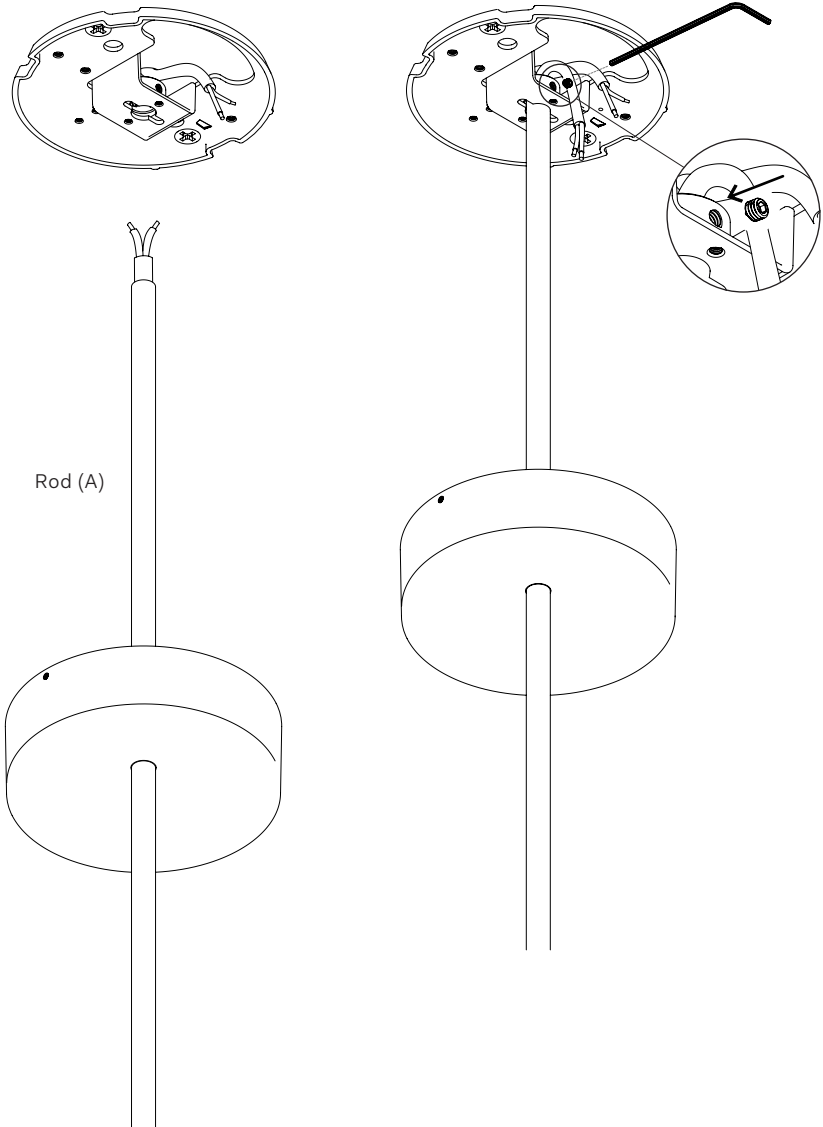




Fig. 13

Connect the positive (+) wire from the Large Tripod Cable (D) to the positive (+) wire of your driver using the connector.  
Connect the negative (-) wire from the Large Tripod Cable (D) to the negative (-) wire of your driver using the connector.

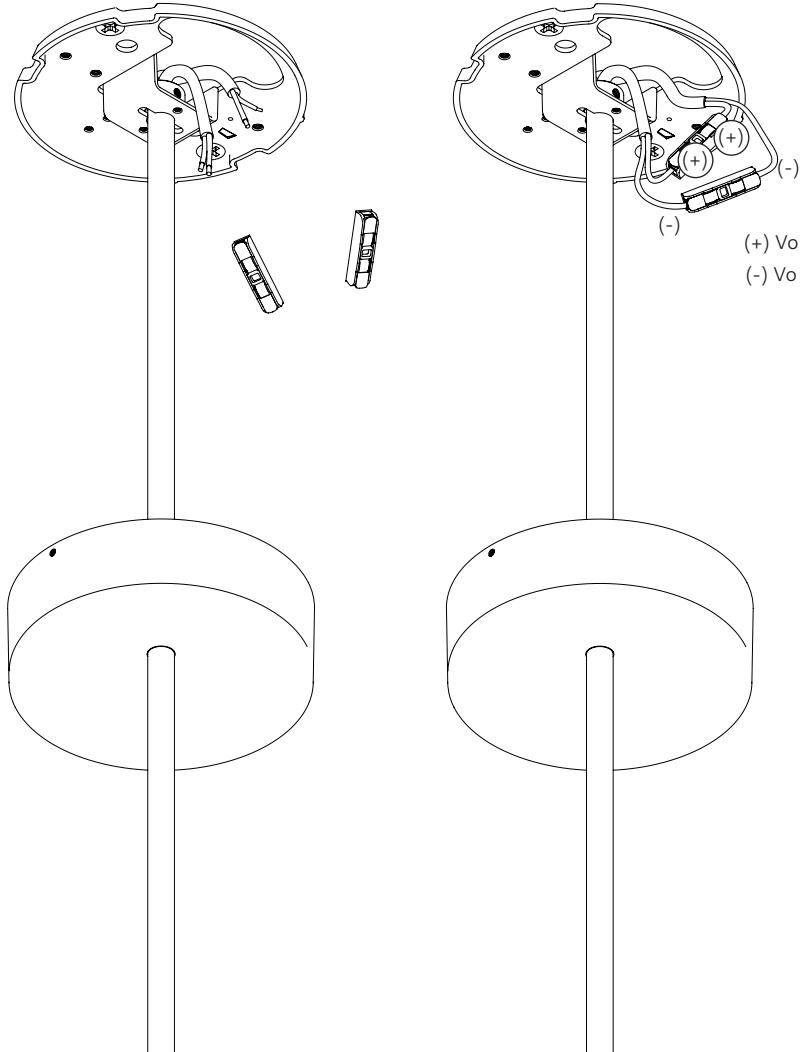


Fig. 14

Neatly tuck the connectors inside the Fixture Bracket.  
Raise the Bracket Cover (E) to the Bracket (F), ensuring the profiles match.  
Rotate clockwise to lock.

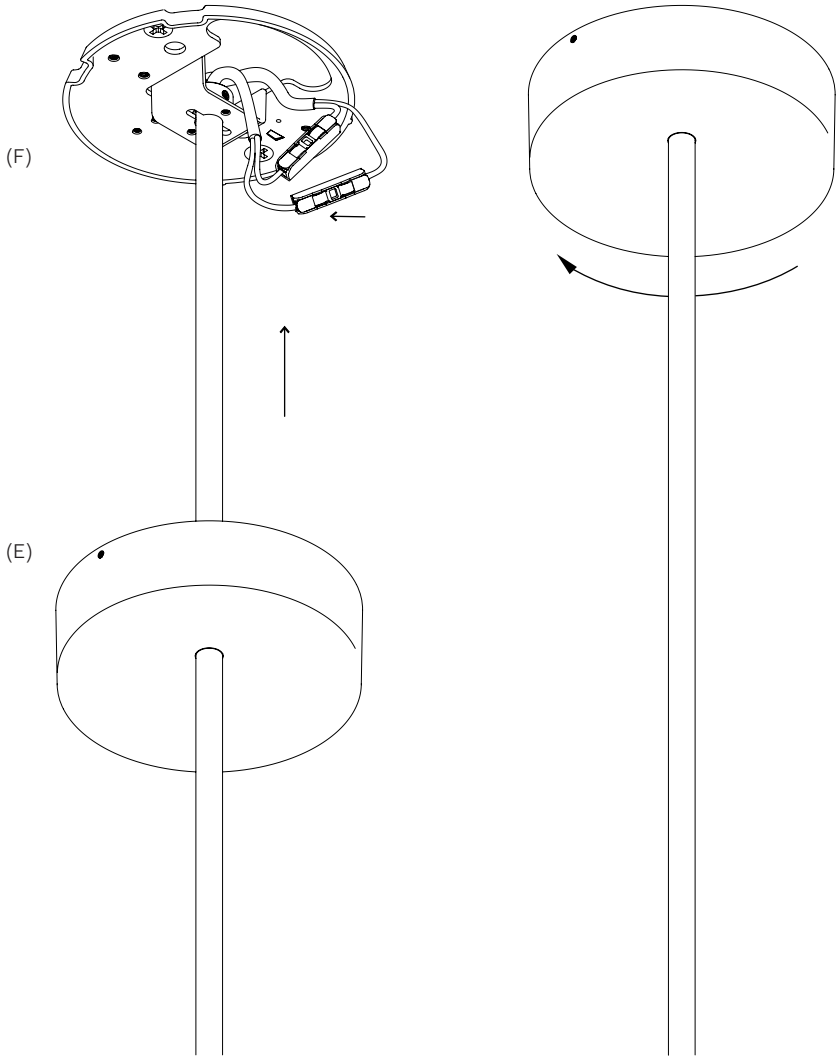


Fig. 15

Ensure the cover is locked before tightening the grub screw.

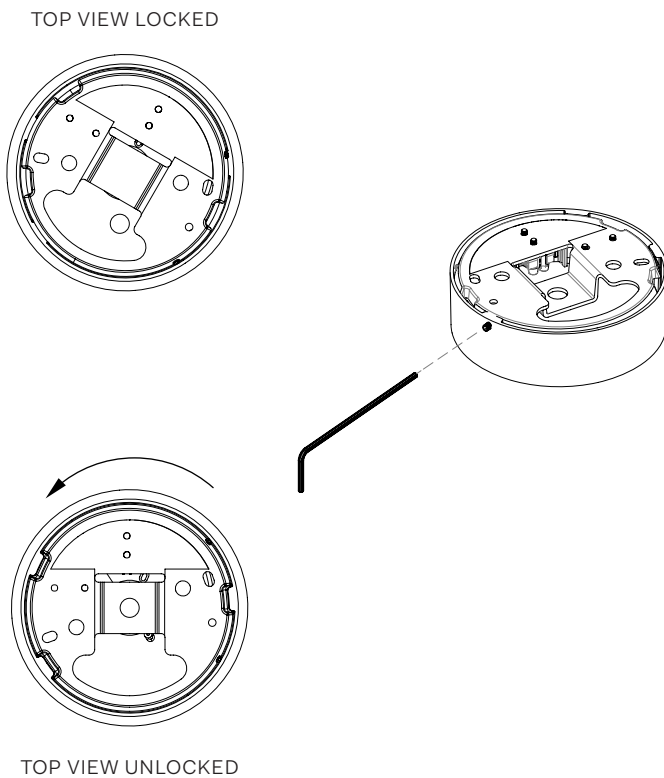


Fig. 16

Thread Center Rod (G) into the bottom of the Large Tripod (D).  
Gently tighten until secure.  
Thread the Small Tripod (H) on to the Center Rod (G).  
Gently tighten until secure.

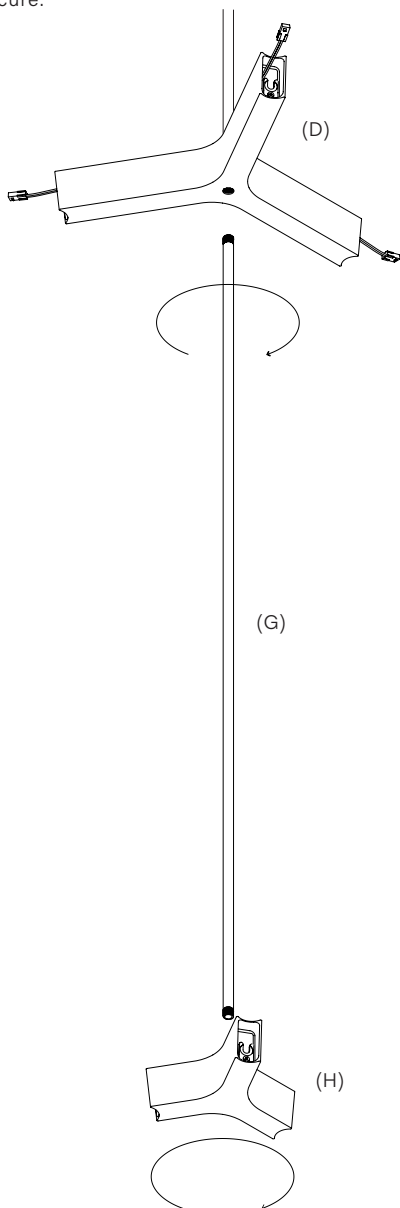


Fig. 17

Loosen the Small Tripod (H) anti-clockwise so that the bulb slots correctly line up with the bulb slots of the Large Tripod (D).

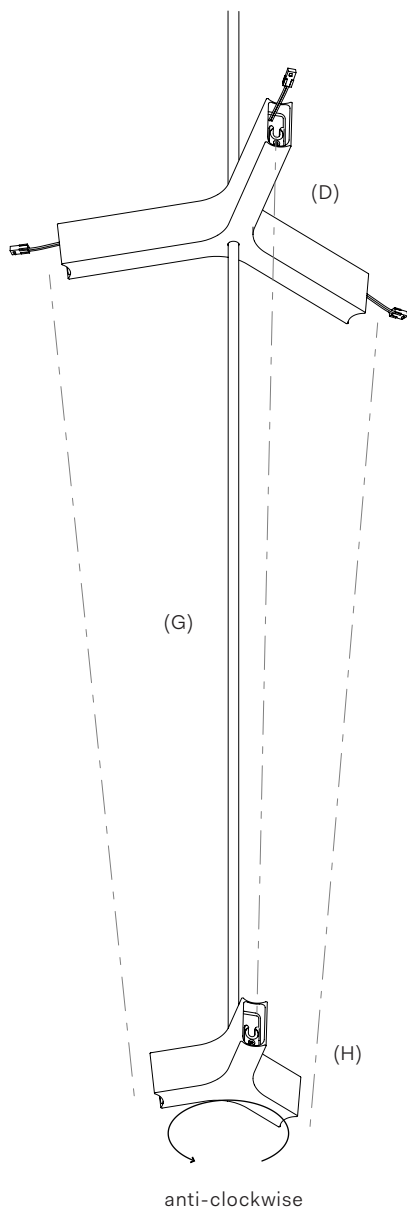


Fig. 18

Plug in each bulb (J) by connecting connector (a) to connector (b).

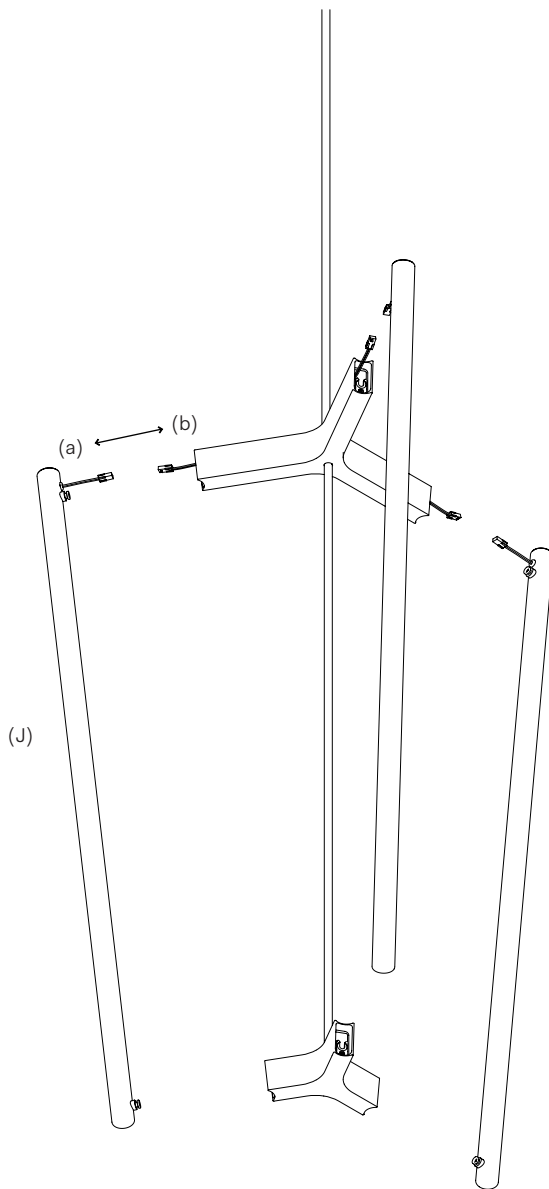


Fig. 19

Gently push the LED connectors and cable neatly inside the Top Tripod slot opening, making sure that no cable is obstructing the keyhole.

Insert the hooks (K) into the keyholes (L) at each end.

Gently push down on the bulb to slot it in place, ensuring the bulb is seated flush.

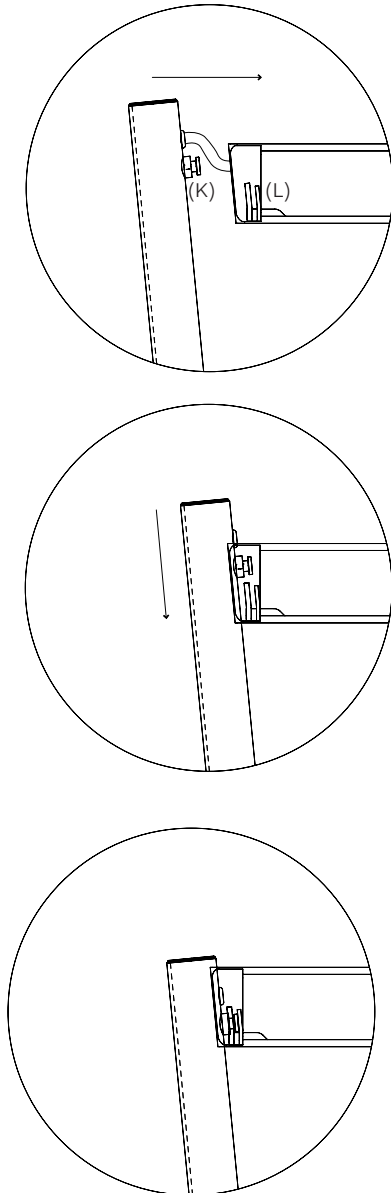
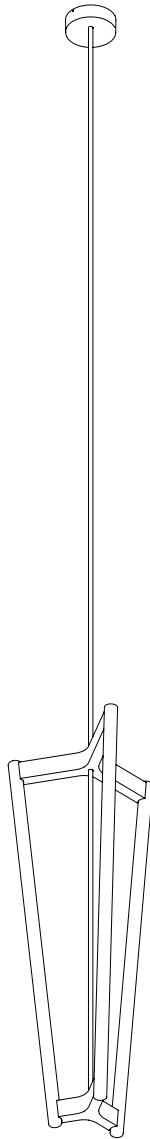


Fig. 20

Your fixture is now complete.







Michael Anastassiades' design philosophy is to preserve the inherent qualities of given material. All of our products are handmade and come in natural finishes, exposed to the elements without any protective lacquers. We look at oxidisation as part of a process that adds to the patina of an object, increasing beauty with time. We try our best for all goods to leave our premises in pristine condition, but sometimes products may arrive with minor oxidisation marks.

Whilst every effort is made to ensure accurate representation of product colours, finishes and dimensions, Michael Anastassiades Ltd reserves the right to alter these details without notice, in compliance with its own production needs, technological changes or in response to the current market needs. Colour swatches are for reference only; Michael Anastassiades Ltd cannot guarantee exact colour match for any product finishes.

All designs are protected under copyright law. Michael Anastassiades holds the exclusive manufacturing and distribution rights worldwide. Copying will be prosecuted.

All light fixtures in this catalogue have CE marking compliance.

Michael Anastassiades Ltd.  
50 Rochester Place, London NW1 9JX  
T +44 (0)20 7928 7527  
sales@michaelanastassiades.com  
www.michaelanastassiades.com  
© 2024 Michael Anastassiades Ltd. All rights reserved.