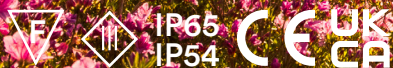


erluna

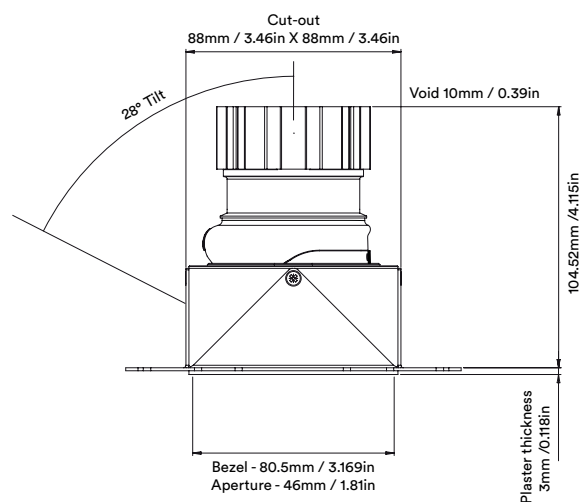
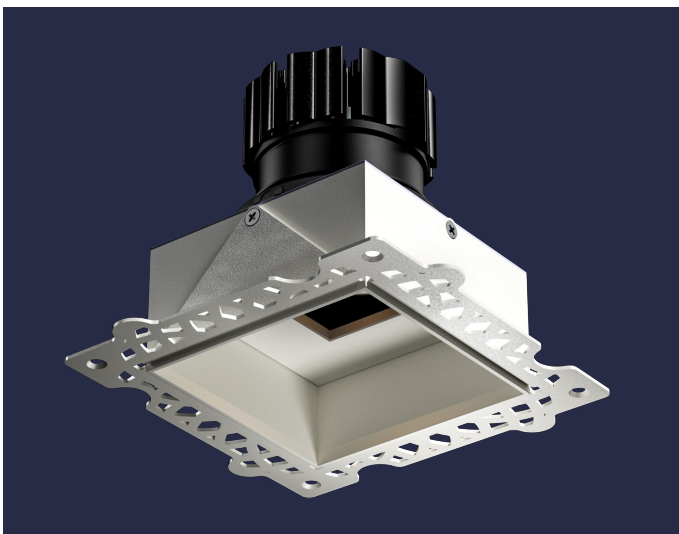
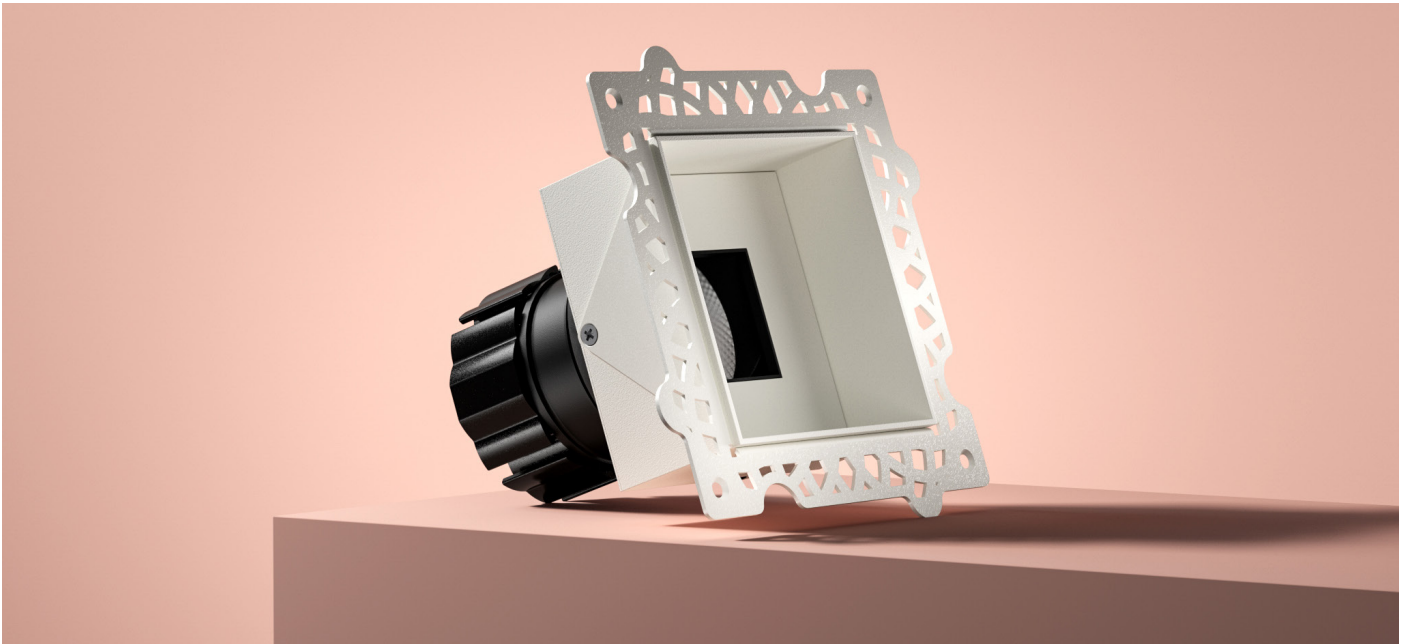
nikko adjustable
origin

circular product



nikko adjustable origin

circular product



nikko adjustable origin

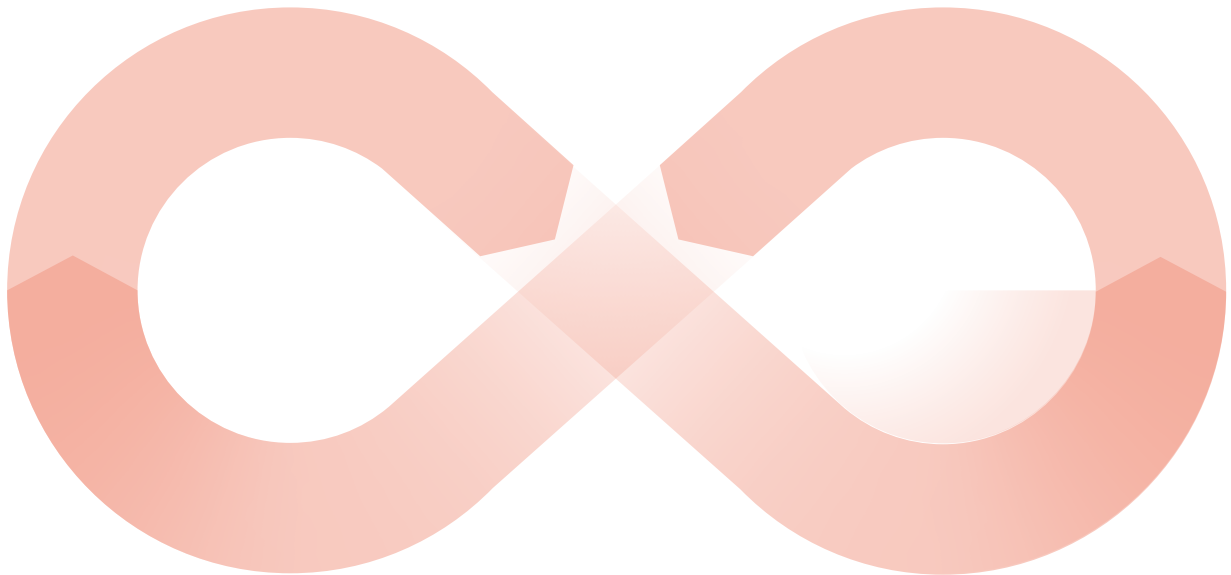
circular product

When an old Orluna light comes to the end of its life, or is faulty, instead of throwing it away, we kindly ask you to return it to us.

1

The fully repaired and tested product enters back into our stock – with a brand new warranty.

3

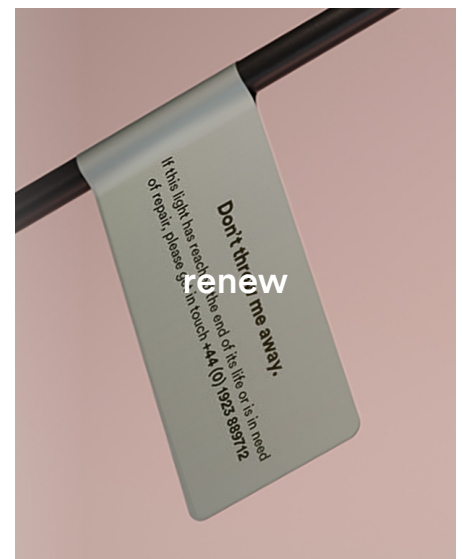


The 'new' light fitting is despatched to a new customer.

4

Once we've received the unwanted or faulty fitting, it's dismantled, repaired and renewed with a new LED and PCB.

2



nikko adjustable origin

circular product

		2700K									
		SPOT			SOFT				SPECIALITY		
LIGHT VALUES	Beam Width FWHM	Ultra	Spot	Narrow	Medium	Wide	Flood	Wash	Crisp	Elliptical	Elliptical
	Initial Lumens	8°	10°	15°	30°	39°	42°	50°	37°	10x45°	20x40°
	Engine Lumens	526	893	1164	1164	1164	1164	1164	1164	1164	1164
	Luminaire Lumens	183	295	380	975	968	935	942	970	323	320
	Engine Lm/W	152	239	307	474	476	416	483	531	153	200
	Engine Lm/W	23	24	33	86	85	82	83	85	26	26
	Luminaire Cd	5198	5826	4089	1454	1022	781	682	1487	575	1107
POWER	Voltage	36V			34V				36V		
	Drive Current	180mA			300mA				300mA		
	Circuit Power (typ)	7.8W			11.4W				12.2W		

		3000K									
		SPOT			SOFT				SPECIALITY		
LIGHT VALUES	Beam Width FWHM	Ultra	Spot	Narrow	Medium	Wide	Flood	Wash	Crisp	Elliptical	Elliptical
	Initial Lumens	9°	11°	14°	31°	40°	44°	54°	37°	10x45°	20x40°
	Engine Lumens	561	935	1252	1252	1252	1252	1252	1252	935	935
	Luminaire Lumens	204	302	407	1013	1026	999	1013	1025	354	350
	Engine Lm/W	153	253	334	504	503	455	505	567	152	215
	Engine Lm/W	26	25	36	89	90	88	89	90	29	29
	Luminaire Cd	4694	5766	4697	1415	1002	795	634	1467	610	1140
POWER	Voltage	36V			34V				36V		
	Drive Current	180mA			300mA				300mA		
	Circuit Power (typ)	7.8W			11.4W				12.2W		

Binning SDCM (Hot)	2										
CRI (typ)(R9)	98 (99)										
TM30 Rf Rg	Rf 93.8 Rg 101.9										
Lifetime (TM21)	L90 B5 50,000hrs (inc driver)										
Lifetime (Calculated)	L70 426,000hrs										
DRIVER	Protocols	Mains Dim / DALI / 0-10V / Non-dim									
	Dim to Dark	0.1% Lux									
	Distance from LED	20m / 65' (series wiring)									
	Emergency	Emergency packs available									

SPECIFICATION CODE

Engine type	Bezel	Colour Temp	Driver	Beam Width	Bezel Colour	Baffle Colour	Options
OR	-NKK-	27	M	S	- W -	BB -	F 54 E
27 / 2700K 30 / 3000K 40 / 4000K			M / Mains Dim D / DALI 0 / 0-10v N / Non Dim X / No Driver	U / Ultra S / Spot N / Narrow M / Medium W / Wide F / Flood H / Wash C / Crisp L / Elliptical Linear O / Elliptical Oval	W / White RAL 9010 D / White RAL 9003 B / Black RAL 9005 C / Other RAL G / Polished Brass K / Brushed Chrome L / Polished Chrome Z / Other Metallic	WB / White RAL 9010 DB / White RAL 9003 BB / Black RAL 9005 CB / Other RAL GB / Polished Brass KB / Brushed Chrome LB / Polished Chrome ZB / Other Metallic	F / 60 min Fire Rated Hood 54 / IP54 65 / IP65 P / Sea & Spa IP65 T / Lockable Tilt & Rotate E / 3hr Emergency H / Honeycomb N / Frosted Lens Z / LSZH Cable K / Click Connector

28/03/24

