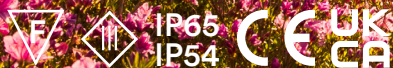


erluna

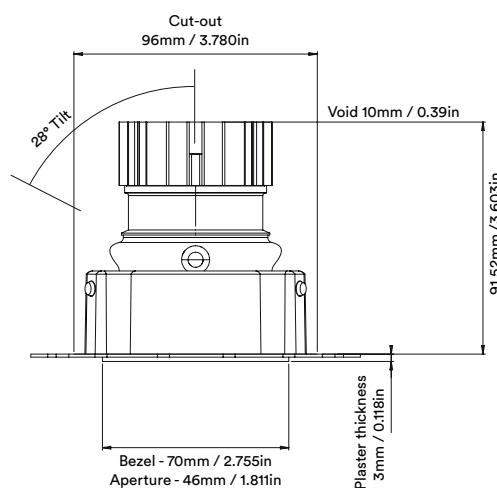
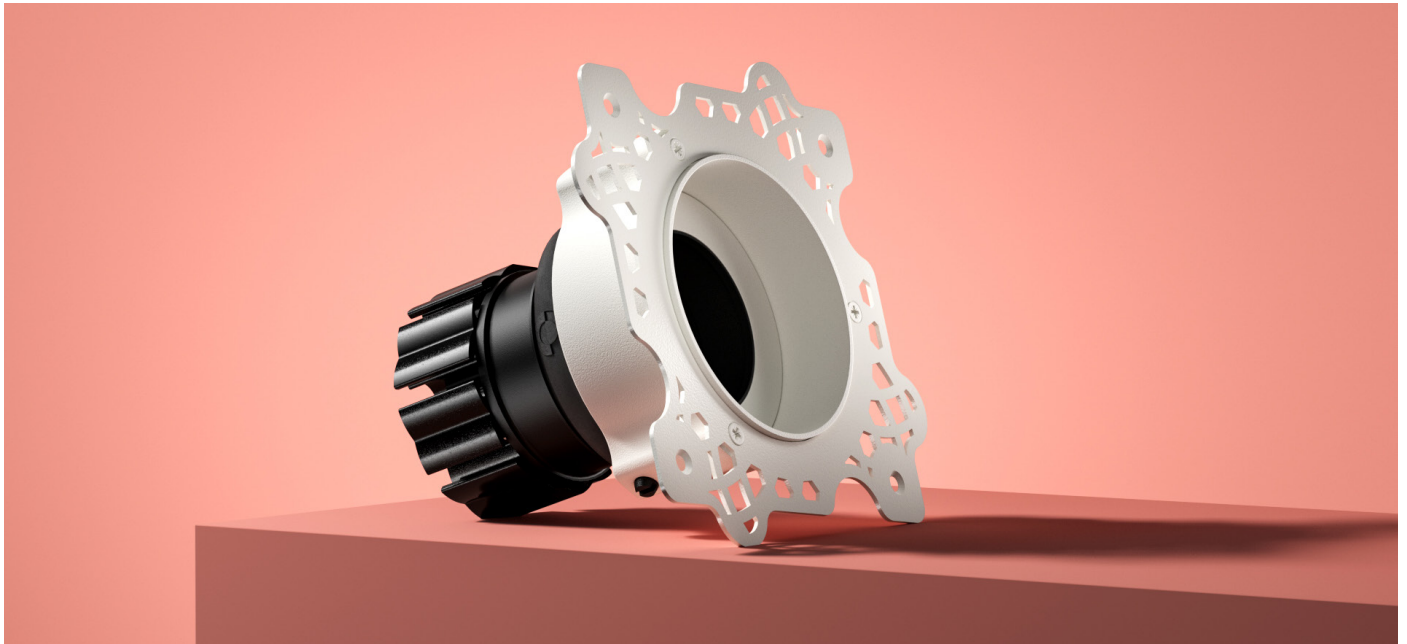
tiyo adjustable
origin

circular product



tiyo adjustable origin

circular product



Unit height increases by
21.65mm / 0.85in
for ultra, spot, narrow,
elliptical linear and elliptical oval beams



tiyo adjustable origin

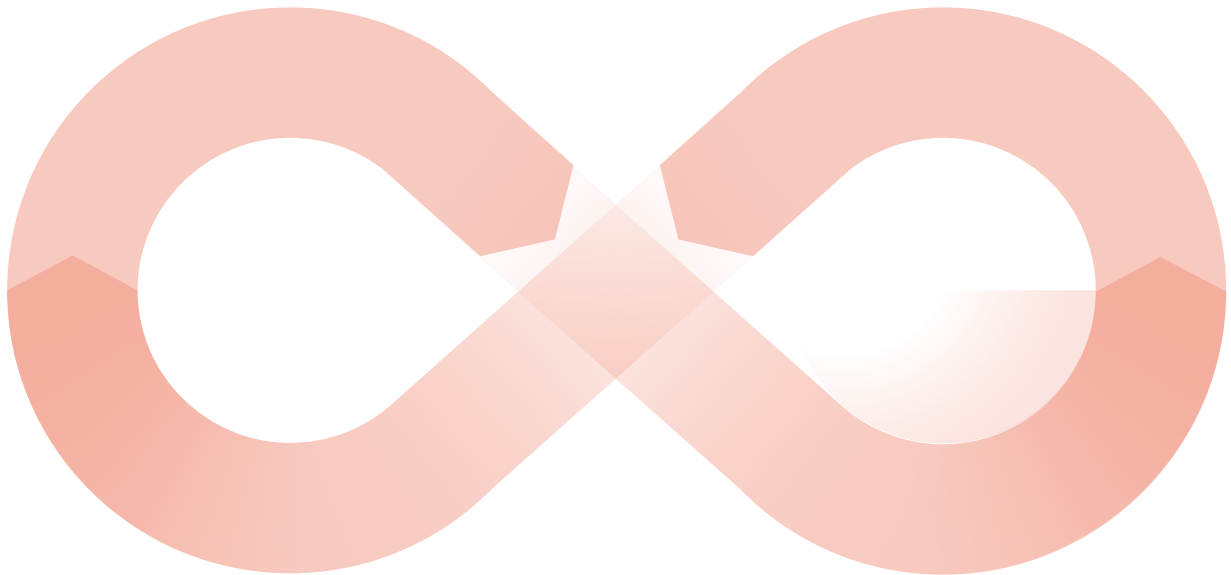
circular product

When an old Orluna light comes to the end of its life, or is faulty, instead of throwing it away, we kindly ask you to return it to us.

1

The fully repaired and tested product enters back into our stock – with a brand new warranty.

3

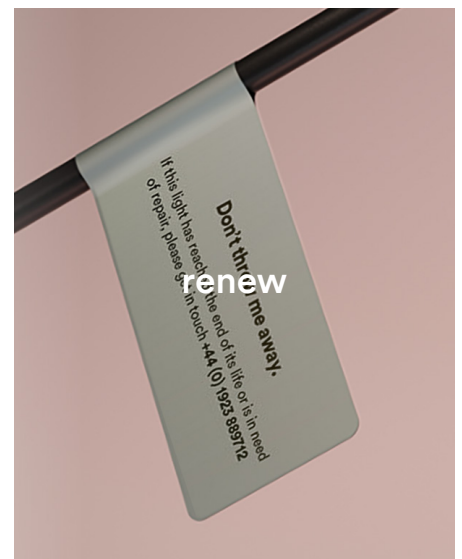


The 'new' light fitting is despatched to a new customer.

4

Once we've received the unwanted or faulty fitting, it's dismantled, repaired and renewed with a new LED and PCB.

2



tiyo adjustable origin

circular product

		2700K									
		SPOT			SOFT				SPECIALITY		
LIGHT VALUES	Beam Width FWHM	Ultra 8°	Spot 10°	Narrow 14°	Medium 27°	Wide 43°	Flood 50°	Wash 57°	Crisp 37°	Elliptical 10x45°	Elliptical 20x40°
	Initial Lumens	526	893	1164	1164	1164	1164	1164	1164	893	893
	Engine Lumens	183	295	380	975	968	935	942	970	323	320
	Luminaire Lumens	185	294	352	637	624	591	620	685	223	217
	Engine Lm/W	23	24	33	86	85	82	83	85	26	26
	Luminaire Cd	6411	7627	5009	2034	1137	863	725	1644	683	1306
	POWER	Voltage	36V	36V	34V				36V		
Drive Current	180mA	300mA	300mA				300mA				
Circuit Power (typ)	7.8W	12.2W	11.4W				12.2W				

		3000K									
		SPOT			SOFT				SPECIALITY		
LIGHT VALUES	Beam Width FWHM	Ultra 9°	Spot 10°	Narrow 14°	Medium 27°	Wide 43°	Flood 50°	Wash 58°	Crisp 38°	Elliptical 10x45°	Elliptical 20x40°
	Initial Lumens	561	935	1252	1252	1252	1252	1252	1252	935	935
	Engine Lumens	204	302	407	1013	1026	999	1013	1025	354	350
	Luminaire Lumens	174	290	363	686	673	634	659	738	192	253
	Engine Lm/W	26	25	36	89	90	88	89	90	29	29
	Luminaire Cd	5557	7070	5152	2165	1221	918	754	1745	721	1327
	POWER	Voltage	36V	36V	34V				36V		
Drive Current	180mA	300mA	300mA				300mA				
Circuit Power (typ)	7.8W	12.2W	11.4W				12.2W				

Binning SDCM (Hot)	2									
CRI (typ)(R9)	98 (99)									
TM30 Rf Rg	Rf 93.8 Rg 101.9									
Lifetime (TM21)	L90 B5 50,000hrs (inc driver)									
Lifetime (Calculated)	L70 426,000hrs									
DRIVER	Protocols	Mains Dim / DALI / 0-10V / Non-dim								
Dim to Dark	0.1% Lux									
Distance from LED	20m / 65' (series wiring)									
Emergency	Emergency packs available									

SPECIFICATION CODE

Engine type	Bezel	Colour Temp	Driver	Beam Width	Bezel Colour	Baffle Colour	Options
OR - TYR -	27	M	S	- W -	BB -	F 54 E	
27 / 2700K 30 / 3000K 40 / 4000K		M / Mains Dim D / DALI 0 / 0-10v N / Non Dim X / No Driver	U / Ultra S / Spot N / Narrow M / Medium W / Wide F / Flood H / Wash C / Crisp L / Elliptical Linear O / Elliptical Oval	W / White RAL 9010 D / White RAL 9003 B / Black RAL 9005 C / Other RAL G / Polished Brass K / Brushed Chrome L / Polished Chrome Z / Other Metallic	WB / White RAL 9010 DB / White RAL 9003 BB / Black RAL 9005 CB / Other RAL GB / Polished Brass KB / Brushed Chrome LB / Polished Chrome ZB / Other Metallic	F / 60 min Fire Rated Hood 54 / IP54 65 / IP65 P / Sea & Spa IP65 E / 3hr Emergency H / Honeycomb N / Frosted Lens Z / LSZH Cable K / Click Connector	

28/03/24